

**MCC Antibody (Center)**  
**Affinity Purified Rabbit Polyclonal Antibody (Pab)**  
**Catalog # AP17244c**

**Specification**

---

**MCC Antibody (Center) - Product Information**

Application	WB,E
Primary Accession	<a href="#">P23508</a>
Other Accession	<a href="#">NP_002378.1</a> , <a href="#">NP_001078846.1</a>
Reactivity	Human
Host	Rabbit
Clonality	Polyclonal
Isotype	Rabbit IgG
Calculated MW	93027
Antigen Region	473-501

**MCC Antibody (Center) - Additional Information**

**Gene ID** 4163

**Other Names**

Colorectal mutant cancer protein, Protein MCC, MCC

**Target/Specificity**

This MCC antibody is generated from rabbits immunized with a KLH conjugated synthetic peptide between 473-501 amino acids from the Central region of human MCC.

**Dilution**

WB~~1:1000

**Format**

Purified polyclonal antibody supplied in PBS with 0.09% (W/V) sodium azide. This antibody is purified through a protein A column, followed by peptide affinity purification.

**Storage**

Maintain refrigerated at 2-8°C for up to 2 weeks. For long term storage store at -20°C in small aliquots to prevent freeze-thaw cycles.

**Precautions**

MCC Antibody (Center) is for research use only and not for use in diagnostic or therapeutic procedures.

**MCC Antibody (Center) - Protein Information**

**Name** MCC

**Function** Candidate for the putative colorectal tumor suppressor gene located at 5q21. Suppresses cell proliferation and the Wnt/b-catenin pathway in colorectal cancer cells. Inhibits

DNA binding of b- catenin/TCF/LEF transcription factors. Involved in cell migration independently of RAC1, CDC42 and p21-activated kinase (PAK) activation (PubMed:[18591935](#), PubMed:[19555689](#), PubMed:[22480440](#)). Represses the beta-catenin pathway (canonical Wnt signaling pathway) in a CCAR2- dependent manner by sequestering CCAR2 to the cytoplasm, thereby impairing its ability to inhibit SIRT1 which is involved in the deacetylation and negative regulation of beta-catenin (CTNB1) transcriptional activity (PubMed:[24824780](#)).

#### Cellular Location

Cell membrane. Cell projection, lamellipodium. Nucleus. Cytoplasm. Note=Colocalizes with actin at the leading edge of polarized cells

#### Tissue Location

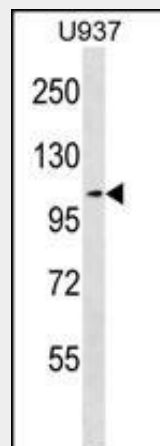
Expressed in a variety of tissues.

### MCC Antibody (Center) - Protocols

Provided below are standard protocols that you may find useful for product applications.

- [Western Blot](#)
- [Blocking Peptides](#)
- [Dot Blot](#)
- [Immunohistochemistry](#)
- [Immunofluorescence](#)
- [Immunoprecipitation](#)
- [Flow Cytometry](#)
- [Cell Culture](#)

### MCC Antibody (Center) - Images



MCC Antibody (Center) (Cat. #AP17244c) western blot analysis in U937 cell line lysates (35ug/lane). This demonstrates the MCC antibody detected the MCC protein (arrow).

### MCC Antibody (Center) - Background

This gene is a candidate colorectal tumor suppressor gene that is thought to negatively regulate cell cycle progression. The orthologous gene in the mouse expresses a phosphoprotein associated with the plasma membrane and membrane organelles, and overexpression of the mouse protein inhibits entry into S phase. Multiple transcript variants encoding different isoforms have been

found for this gene.

### **MCC Antibody (Center) - References**

Rose, J.E., et al. Mol. Med. 16 (7-8), 247-253 (2010) :  
Yoshida, T., et al. Int. J. Mol. Med. 25(4):649-656(2010)  
Oguri, M., et al. Am. J. Hypertens. 23(1):70-77(2010)  
Arnaud, C., et al. FEBS Lett. 583(14):2326-2332(2009)  
Fukuyama, R., et al. Oncogene 27(46):6044-6055(2008)