

TROVE2 Antibody (C-term)
Affinity Purified Rabbit Polyclonal Antibody (Pab)
Catalog # AP17234b**Specification**

TROVE2 Antibody (C-term) - Product Information

| | |
|-------------------|--|
| Application | WB,E |
| Primary Accession | P10155 |
| Other Accession | O08848 , NP_001035828.1 , NP_001166995.1 |
| Reactivity | Human |
| Predicted | Mouse |
| Host | Rabbit |
| Clonality | Polyclonal |
| Isotype | Rabbit IgG |
| Calculated MW | 60671 |
| Antigen Region | 467-495 |

TROVE2 Antibody (C-term) - Additional Information**Gene ID** 6738**Other Names**

60 kDa SS-A/Ro ribonucleoprotein, 60 kDa Ro protein, 60 kDa ribonucleoprotein Ro, RoRNP, Ro 60 kDa autoantigen, Sjogren syndrome antigen A2, Sjogren syndrome type A antigen, SS-A, TROVE domain family member 2, TROVE2, RO60, SSA2

Target/Specificity

This TROVE2 antibody is generated from rabbits immunized with a KLH conjugated synthetic peptide between 467-495 amino acids from the C-terminal region of human TROVE2.

Dilution

WB~~1:1000

Format

Purified polyclonal antibody supplied in PBS with 0.09% (W/V) sodium azide. This antibody is purified through a protein A column, followed by peptide affinity purification.

Storage

Maintain refrigerated at 2-8°C for up to 2 weeks. For long term storage store at -20°C in small aliquots to prevent freeze-thaw cycles.

Precautions

TROVE2 Antibody (C-term) is for research use only and not for use in diagnostic or therapeutic procedures.

TROVE2 Antibody (C-term) - Protein Information**Name** RO60 ([HGNC:11313](#))

Function RNA-binding protein that binds to misfolded non-coding RNAs, pre-5S rRNA, and several small cytoplasmic RNA molecules known as Y RNAs (PubMed:[18056422](#), PubMed:[26382853](#)). Binds to endogenous Alu retroelements which are induced by type I interferon and stimulate proinflammatory cytokine secretion (PubMed:[26382853](#)). Regulates the expression of Alu retroelements as well as inflammatory genes (PubMed:[26382853](#)). May play roles in cilia formation and/or maintenance (By similarity).

Cellular Location

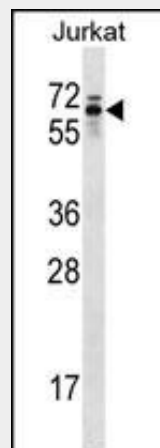
Cytoplasm. Note=Localized in cytoplasmic mRNP granules containing untranslated mRNAs.

TROVE2 Antibody (C-term) - Protocols

Provided below are standard protocols that you may find useful for product applications.

- [Western Blot](#)
- [Blocking Peptides](#)
- [Dot Blot](#)
- [Immunohistochemistry](#)
- [Immunofluorescence](#)
- [Immunoprecipitation](#)
- [Flow Cytometry](#)
- [Cell Culture](#)

TROVE2 Antibody (C-term) - Images



TROVE2 Antibody (C-term) (Cat. #AP17234b) western blot analysis in Jurkat cell line lysates (35ug/lane). This demonstrates the TROVE2 antibody detected the TROVE2 protein (arrow).

TROVE2 Antibody (C-term) - Background

RNA-binding protein that binds to several small cytoplasmic RNA molecules known as Y RNAs. May stabilize these RNAs from degradation.

TROVE2 Antibody (C-term) - References

- Reed, J.H., et al. Arthritis Rheum. 62(5):1448-1456(2010)
Davila, S., et al. Genes Immun. 11(3):232-238(2010)
Clancy, R.M., et al. J. Immunol. 184(4):2148-2155(2010)
Reed, J.H., et al. Arthritis Rheum. 60(3):860-869(2009)
Barcellos, K.S., et al. J. Rheumatol. 34(6):1283-1292(2007)