

UBE2Z Antibody (C-term)
Affinity Purified Rabbit Polyclonal Antibody (Pab)
Catalog # AP17226b

Specification

UBE2Z Antibody (C-term) - Product Information

Application	WB,E
Primary Accession	Q9H832
Other Accession	Q6PCF7 , Q3B7D1 , Q3UE37 , NP_075567.2
Reactivity	Human
Predicted	Mouse, Rat, Xenopus
Host	Rabbit
Clonality	Polyclonal
Isotype	Rabbit IgG
Calculated MW	38210
Antigen Region	284-310

UBE2Z Antibody (C-term) - Additional Information

Gene ID 65264

Other Names

Ubiquitin-conjugating enzyme E2 Z, Uba6-specific E2 conjugating enzyme 1, Use1, Ubiquitin carrier protein Z, Ubiquitin-protein ligase Z, UBE2Z

Target/Specificity

This UBE2Z antibody is generated from rabbits immunized with a KLH conjugated synthetic peptide between 284-310 amino acids from the C-terminal region of human UBE2Z.

Dilution

WB~~1:1000

Format

Purified polyclonal antibody supplied in PBS with 0.09% (W/V) sodium azide. This antibody is purified through a protein A column, followed by peptide affinity purification.

Storage

Maintain refrigerated at 2-8°C for up to 2 weeks. For long term storage store at -20°C in small aliquots to prevent freeze-thaw cycles.

Precautions

UBE2Z Antibody (C-term) is for research use only and not for use in diagnostic or therapeutic procedures.

UBE2Z Antibody (C-term) - Protein Information

Name UBE2Z

Function Catalyzes the covalent attachment of ubiquitin to other proteins (By similarity). Specific substrate for UBA6, not charged with ubiquitin by UBE1. May be involved in apoptosis regulation.

Cellular Location

Cytoplasm. Nucleus

Tissue Location

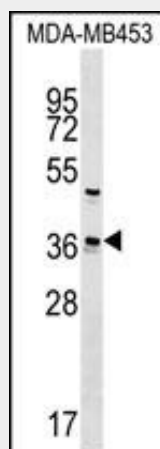
Widely expressed. Highly in placenta, pancreas, spleen and testis.

UBE2Z Antibody (C-term) - Protocols

Provided below are standard protocols that you may find useful for product applications.

- [Western Blot](#)
- [Blocking Peptides](#)
- [Dot Blot](#)
- [Immunohistochemistry](#)
- [Immunofluorescence](#)
- [Immunoprecipitation](#)
- [Flow Cytometry](#)
- [Cell Culture](#)

UBE2Z Antibody (C-term) - Images



UBE2Z Antibody (C-term) (Cat. #AP17226b) western blot analysis in MDA-MB453 cell line lysates (35ug/lane). This demonstrates the UBE2Z antibody detected the UBE2Z protein (arrow).

UBE2Z Antibody (C-term) - Background

Modification of proteins with ubiquitin (UBB; MIM 191339) or ubiquitin-like proteins controls many signaling networks and requires a ubiquitin activating enzyme (E1), a ubiquitin conjugating enzyme (E2), and a ubiquitin protein ligase (E3). UBE2Z is an E2 enzyme (Jin et al., 2007 [PubMed 17597759]). [supplied by OMIM].

UBE2Z Antibody (C-term) - References

Gu, X., et al. Mol. Biol. Rep. 34(3):183-188(2007)
Jin, J., et al. Nature 447(7148):1135-1138(2007)