

**TRAFD1 Antibody (C-term)**  
**Affinity Purified Rabbit Polyclonal Antibody (Pab)**  
**Catalog # AP17218b**

**Specification**

---

**TRAFD1 Antibody (C-term) - Product Information**

Application	WB,E
Primary Accession	<a href="#">O14545</a>
Other Accession	<a href="#">O4R970</a> , <a href="#">NP_001137378.1</a> , <a href="#">NP_006691.1</a>
Reactivity	Human
Predicted	Monkey
Host	Rabbit
Clonality	Polyclonal
Isotype	Rabbit IgG
Calculated MW	64841
Antigen Region	542-569

**TRAFD1 Antibody (C-term) - Additional Information**

**Gene ID** 10906

**Other Names**

TRAF-type zinc finger domain-containing protein 1, Protein FLN29, TRAFD1, FLN29

**Target/Specificity**

This TRAFD1 antibody is generated from rabbits immunized with a KLH conjugated synthetic peptide between 542-569 amino acids from the C-terminal region of human TRAFD1.

**Dilution**

WB~~1:1000

**Format**

Purified polyclonal antibody supplied in PBS with 0.09% (W/V) sodium azide. This antibody is purified through a protein A column, followed by peptide affinity purification.

**Storage**

Maintain refrigerated at 2-8°C for up to 2 weeks. For long term storage store at -20°C in small aliquots to prevent freeze-thaw cycles.

**Precautions**

TRAFD1 Antibody (C-term) is for research use only and not for use in diagnostic or therapeutic procedures.

**TRAFD1 Antibody (C-term) - Protein Information**

**Name** TRAFD1

**Synonyms** FLN29

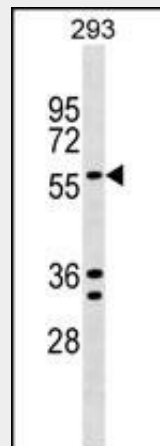
**Function** Negative feedback regulator that controls excessive innate immune responses. Regulates both Toll-like receptor 4 (TLR4) and DDX58/RIG1-like helicases (RLH) pathways. May inhibit the LTR pathway by direct interaction with TRAF6 and attenuation of NF-kappa-B activation. May negatively regulate the RLH pathway downstream from MAVS and upstream of NF-kappa-B and IRF3 (By similarity).

### TRAFD1 Antibody (C-term) - Protocols

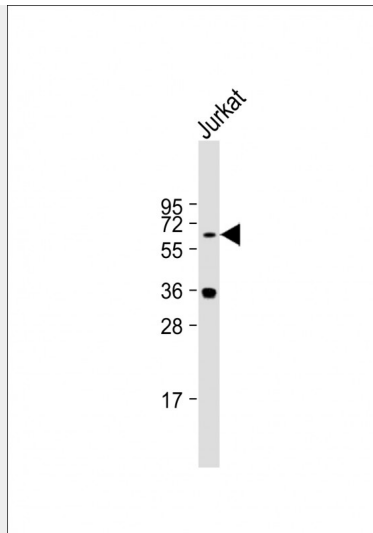
Provided below are standard protocols that you may find useful for product applications.

- [Western Blot](#)
- [Blocking Peptides](#)
- [Dot Blot](#)
- [Immunohistochemistry](#)
- [Immunofluorescence](#)
- [Immunoprecipitation](#)
- [Flow Cytometry](#)
- [Cell Culture](#)

### TRAFD1 Antibody (C-term) - Images



TRAFD1 Antibody (C-term) (Cat. #AP17218b) western blot analysis in 293 cell line lysates (35ug/lane). This demonstrates the TRAFD1 antibody detected the TRAFD1 protein (arrow).



Anti-TRAFD1 Antibody (C-term) at 1:1000 dilution + Jurkat whole cell lysate Lysates/proteins at 20 µg per lane. Secondary Goat Anti-Rabbit IgG, (H+L), Peroxidase conjugated at 1/10000 dilution. Predicted band size : 65 kDa Blocking/Dilution buffer: 5% NFDM/TBST.

#### **TRAFD1 Antibody (C-term) - Background**

The innate immune system confers host defense against viral and microbial infection, and TRAFD1 is a negative feedback regulator that controls excessive immune responses (Sanada et al., 2008 [PubMed 18849341]).

#### **TRAFD1 Antibody (C-term) - References**

- Ganesh, S.K., et al. Nat. Genet. 41(11):1191-1198(2009)
- Sanada, T., et al. J. Biol. Chem. 283(49):33858-33864(2008)
- Nature 447(7145):661-678(2007)
- Olsen, J.V., et al. Cell 127(3):635-648(2006)
- Beausoleil, S.A., et al. Nat. Biotechnol. 24(10):1285-1292(2006)