

**PPP1R13B Antibody (Center)**  
**Affinity Purified Rabbit Polyclonal Antibody (Pab)**  
**Catalog # AP17200C**

**Specification**

---

**PPP1R13B Antibody (Center) - Product Information**

Application	WB,E
Primary Accession	<a href="#">O96KQ4</a>
Other Accession	<a href="#">NP_056131.2</a>
Reactivity	Human
Host	Rabbit
Clonality	Polyclonal
Isotype	Rabbit IgG
Calculated MW	119565
Antigen Region	623-652

**PPP1R13B Antibody (Center) - Additional Information**

**Gene ID** 23368

**Other Names**

Apoptosis-stimulating of p53 protein 1, Protein phosphatase 1 regulatory subunit 13B, PPP1R13B, ASPP1, KIAA0771

**Target/Specificity**

This PPP1R13B antibody is generated from rabbits immunized with a KLH conjugated synthetic peptide between 623-652 amino acids from the Central region of human PPP1R13B.

**Dilution**

WB~~1:1000

**Format**

Purified polyclonal antibody supplied in PBS with 0.09% (W/V) sodium azide. This antibody is purified through a protein A column, followed by peptide affinity purification.

**Storage**

Maintain refrigerated at 2-8°C for up to 2 weeks. For long term storage store at -20°C in small aliquots to prevent freeze-thaw cycles.

**Precautions**

PPP1R13B Antibody (Center) is for research use only and not for use in diagnostic or therapeutic procedures.

**PPP1R13B Antibody (Center) - Protein Information**

**Name** PPP1R13B

**Synonyms** ASPP1, KIAA0771

**Function** Regulator that plays a central role in regulation of apoptosis via its interaction with p53/TP53 (PubMed:[11684014](#), PubMed:[12524540](#)). Regulates TP53 by enhancing the DNA binding and transactivation function of TP53 on the promoters of proapoptotic genes in vivo.

**Cellular Location**

Cytoplasm. Nucleus. Note=Predominantly cytoplasmic. Some fraction is nuclear

**Tissue Location**

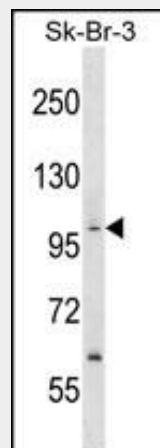
Reduced expression in breast carcinomas expressing a wild-type TP53 protein.

**PPP1R13B Antibody (Center) - Protocols**

Provided below are standard protocols that you may find useful for product applications.

- [Western Blot](#)
- [Blocking Peptides](#)
- [Dot Blot](#)
- [Immunohistochemistry](#)
- [Immunofluorescence](#)
- [Immunoprecipitation](#)
- [Flow Cytometry](#)
- [Cell Culture](#)

**PPP1R13B Antibody (Center) - Images**



PPP1R13B Antibody (Center) (Cat. #AP17200c) western blot analysis in SK-BR-3 cell line lysates (35ug/lane). This demonstrates the PPP1R13B antibody detected the PPP1R13B protein (arrow).

**PPP1R13B Antibody (Center) - Background**

This gene encodes a member of the ASPP (apoptosis-stimulating protein of p53) family of p53 interacting proteins. The protein contains four ankyrin repeats and an SH3 domain involved in protein-protein interactions. ASPP proteins are required for the induction of apoptosis by p53-family proteins. They promote DNA binding and transactivation of p53-family proteins on the promoters of proapoptotic genes. Expression of this gene is regulated by the E2F transcription factor.

**PPP1R13B Antibody (Center) - References**

Figl, A., et al. Mutat. Res. 702(1):8-16(2010)  
Rose, J.E., et al. Mol. Med. 16 (7-8), 247-253 (2010) :  
Zhao, J., et al. Hepatology 51(1):142-153(2010)  
Agirre, X., et al. Oncogene 25(13):1862-1870(2006)  
Liu, Z.J., et al. Biochim. Biophys. Acta 1756(1):77-80(2005)