

IL13RA1 Antibody (N-term)
Affinity Purified Rabbit Polyclonal Antibody (Pab)
Catalog # AP17187A

Specification

IL13RA1 Antibody (N-term) - Product Information

| | |
|-------------------|-----------------------------|
| Application | WB,E |
| Primary Accession | P78552 |
| Other Accession | NP_001551.1 |
| Reactivity | Human |
| Host | Rabbit |
| Clonality | Polyclonal |
| Isotype | Rabbit IgG |
| Calculated MW | 48760 |
| Antigen Region | 56-85 |

IL13RA1 Antibody (N-term) - Additional Information

Gene ID 3597

Other Names

Interleukin-13 receptor subunit alpha-1, IL-13 receptor subunit alpha-1, IL-13R subunit alpha-1, IL-13R-alpha-1, IL-13RA1, Cancer/testis antigen 19, CT19, CD213a1, IL13RA1, IL13R, IL13RA

Target/Specificity

This IL13RA1 antibody is generated from rabbits immunized with a KLH conjugated synthetic peptide between 56-85 amino acids from the N-terminal region of human IL13RA1.

Dilution

WB~~1:1000

Format

Purified polyclonal antibody supplied in PBS with 0.09% (W/V) sodium azide. This antibody is purified through a protein A column, followed by peptide affinity purification.

Storage

Maintain refrigerated at 2-8°C for up to 2 weeks. For long term storage store at -20°C in small aliquots to prevent freeze-thaw cycles.

Precautions

IL13RA1 Antibody (N-term) is for research use only and not for use in diagnostic or therapeutic procedures.

IL13RA1 Antibody (N-term) - Protein Information

Name IL13RA1

Synonyms IL13R, IL13RA

Function Binds with low affinity to interleukin-13 (IL13). Together with IL4RA can form a functional receptor for IL13. Also serves as an alternate accessory protein to the common cytokine receptor gamma chain for interleukin-4 (IL4) signaling, but cannot replace the function of IL2RG in allowing enhanced interleukin-2 (IL2) binding activity.

Cellular Location

Membrane; Single-pass type I membrane protein.

Tissue Location

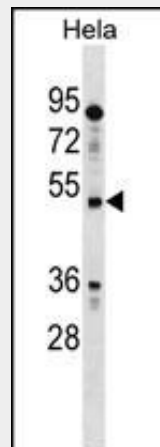
Ubiquitous. Highest levels in heart, liver, skeletal muscle and ovary; lowest levels in brain, lung and kidney Also found in B-cells, T-cells and endothelial cells

IL13RA1 Antibody (N-term) - Protocols

Provided below are standard protocols that you may find useful for product applications.

- [Western Blot](#)
- [Blocking Peptides](#)
- [Dot Blot](#)
- [Immunohistochemistry](#)
- [Immunofluorescence](#)
- [Immunoprecipitation](#)
- [Flow Cytometry](#)
- [Cell Culture](#)

IL13RA1 Antibody (N-term) - Images



IL13RA1 Antibody (N-term) (Cat. #AP17187a) western blot analysis in HeLa cell line lysates (35ug/lane). This demonstrates the IL13RA1 antibody detected the IL13RA1 protein (arrow).

IL13RA1 Antibody (N-term) - Background

The protein encoded by this gene is a subunit of the interleukin 13 receptor. This subunit forms a receptor complex with IL4 receptor alpha, a subunit shared by IL13 and IL4 receptors. This subunit serves as a primary IL13-binding subunit of the IL13 receptor, and may also be a component of IL4 receptors. This protein has been shown to bind tyrosine kinase TYK2, and thus may mediate the signaling processes that lead to the activation of JAK1, STAT3 and STAT6 induced by IL13 and IL4. [provided by

RefSeq].

IL13RA1 Antibody (N-term) - References

- Bailey, S.D., et al. Diabetes Care 33(10):2250-2253(2010)
Schuurhof, A., et al. Pediatr. Pulmonol. 45(6):608-613(2010)
Davila, S., et al. Genes Immun. 11(3):232-238(2010)
Talmud, P.J., et al. Am. J. Hum. Genet. 85(5):628-642(2009)
Park, S.W., et al. J. Korean Med. Sci. 24(4):614-620(2009)