

**Bmp15 Antibody (N-term)**  
**Purified Rabbit Polyclonal Antibody (Pab)**  
**Catalog # AP1711a****Specification**

---

**Bmp15 Antibody (N-term) - Product Information**

Application	WB,E
Primary Accession	<a href="#">O95972</a>
Other Accession	<a href="#">NP_005439</a>
Reactivity	Human
Host	Rabbit
Clonality	Polyclonal
Isotype	Rabbit IgG
Calculated MW	45055
Antigen Region	4-33

**Bmp15 Antibody (N-term) - Additional Information****Gene ID** 9210**Other Names**

Bone morphogenetic protein 15, BMP-15, Growth/differentiation factor 9B, GDF-9B, BMP15, GDF9B

**Target/Specificity**

This Bmp15 antibody is generated from rabbits immunized with a KLH conjugated synthetic peptide between 4-33 amino acids from the N-terminal region of human Bmp15.

**Dilution**

WB~~1:1000

**Format**

Purified polyclonal antibody supplied in PBS with 0.09% (W/V) sodium azide. This antibody is prepared by Saturated Ammonium Sulfate (SAS) precipitation followed by dialysis against PBS.

**Storage**

Maintain refrigerated at 2-8°C for up to 2 weeks. For long term storage store at -20°C in small aliquots to prevent freeze-thaw cycles.

**Precautions**

Bmp15 Antibody (N-term) is for research use only and not for use in diagnostic or therapeutic procedures.

**Bmp15 Antibody (N-term) - Protein Information****Name** BMP15**Synonyms** GDF9B

**Function** May be involved in follicular development. Oocyte-specific growth/differentiation factor that stimulates folliculogenesis and granulosa cell (GC) growth.

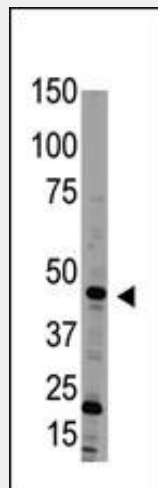
**Cellular Location**  
Secreted.

### **Bmp15 Antibody (N-term) - Protocols**

Provided below are standard protocols that you may find useful for product applications.

- [Western Blot](#)
- [Blocking Peptides](#)
- [Dot Blot](#)
- [Immunohistochemistry](#)
- [Immunofluorescence](#)
- [Immunoprecipitation](#)
- [Flow Cytometry](#)
- [Cell Culture](#)

### **Bmp15 Antibody (N-term) - Images**



Western blot analysis of anti-Bmp15 Antibody (N-term) (Cat. #AP1711a) in HL60 cell line lysate (35ug/lane). Bmp15(arrow) was detected using the purified Pab.

### **Bmp15 Antibody (N-term) - Background**

Bmp15 is a member of the bone morphogenetic protein family which is part of the transforming growth factor-beta superfamily. The transforming growth factor-beta superfamily includes large families of growth and differentiation factors. It is thought that this protein may be involved in oocyte maturation and follicular development as a homodimer or by forming heterodimers with a related protein, Gdf9.

### **Bmp15 Antibody (N-term) - References**

- Liao, W.X., et al., J. Biol. Chem. 278(6):3713-3719 (2003).  
Moore, R.K., et al., J. Biol. Chem. 278(1):304-310 (2003).  
Galloway, S.M., et al., Nat. Genet. 25(3):279-283 (2000).  
Aaltonen, J., et al., J. Clin. Endocrinol. Metab. 84(8):2744-2750 (1999).

Dube, J.L., et al., Mol. Endocrinol. 12(12):1809-1817 (1998).