

**PDE7A Antibody (N-term)**  
**Affinity Purified Rabbit Polyclonal Antibody (Pab)**  
**Catalog # AP17110A**

**Specification**

---

**PDE7A Antibody (N-term) - Product Information**

Application	WB,E
Primary Accession	<a href="#">Q13946</a>
Other Accession	<a href="#">O08593</a> , <a href="#">P70453</a> , <a href="#">NP_002594.1</a> , <a href="#">NP_002595.1</a>
Reactivity	Human
Predicted	Mouse, Rat
Host	Rabbit
Clonality	Polyclonal
Isotype	Rabbit IgG
Calculated MW	55505
Antigen Region	66-94

**PDE7A Antibody (N-term) - Additional Information**

**Gene ID** 5150

**Other Names**

High affinity cAMP-specific 3', 5'-cyclic phosphodiesterase 7A, HCP1, TM22, PDE7A

**Target/Specificity**

This PDE7A antibody is generated from rabbits immunized with a KLH conjugated synthetic peptide between 66-94 amino acids from the N-terminal region of human PDE7A.

**Dilution**

WB~~1:1000

**Format**

Purified polyclonal antibody supplied in PBS with 0.09% (W/V) sodium azide. This antibody is purified through a protein A column, followed by peptide affinity purification.

**Storage**

Maintain refrigerated at 2-8°C for up to 2 weeks. For long term storage store at -20°C in small aliquots to prevent freeze-thaw cycles.

**Precautions**

PDE7A Antibody (N-term) is for research use only and not for use in diagnostic or therapeutic procedures.

**PDE7A Antibody (N-term) - Protein Information**

**Name** PDE7A {ECO:0000303|PubMed:9195912, ECO:0000312|HGNC:HGNC:8791}

**Function** Hydrolyzes the second messenger cAMP, which is a key regulator of many important

physiological processes (PubMed:[19350606](#), PubMed:[8389765](#), PubMed:[9195912](#)). May have a role in muscle signal transduction (PubMed:[9195912](#)).

#### Cellular Location

[Isoform PDE7A1]: Cytoplasm, cytosol. Note=PDE7A1 (57 kDa) is located mostly to soluble cellular fractions.

#### Tissue Location

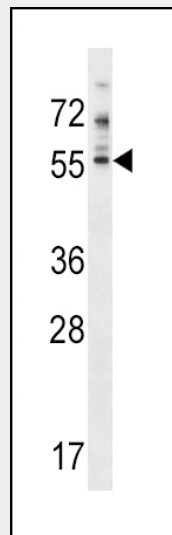
[Isoform PDE7A1]: Found at high levels in skeletal muscle and at low levels in a variety of tissues including brain and heart (PubMed:9195912). It is expressed as well in two T-cell lines (PubMed:9195912).

### PDE7A Antibody (N-term) - Protocols

Provided below are standard protocols that you may find useful for product applications.

- [Western Blot](#)
- [Blocking Peptides](#)
- [Dot Blot](#)
- [Immunohistochemistry](#)
- [Immunofluorescence](#)
- [Immunoprecipitation](#)
- [Flow Cytometry](#)
- [Cell Culture](#)

### PDE7A Antibody (N-term) - Images



PDE7A Antibody (N-term) (Cat. #AP17110a) western blot analysis in NCI-H460 cell line lysates (35ug/lane). This demonstrates the PDE7A antibody detected the PDE7A protein (arrow).

### PDE7A Antibody (N-term) - Background

Hydrolyzes the second messenger cAMP, which is a key regulator of many important physiological processes. May have a role in muscle signal transduction.

### PDE7A Antibody (N-term) - References

Bailey, S.D., et al. Diabetes Care (2010) In press :  
Rose, J.E., et al. Mol. Med. 16 (7-8), 247-253 (2010) :  
Talmud, P.J., et al. Am. J. Hum. Genet. 85(5):628-642(2009)  
Pekkinen, M., et al. Bone 43(1):84-91(2008)  
Wang, H., et al. J. Biol. Chem. 280(35):30949-30955(2005)