

**SH3GL1 Antibody (C-term)**  
**Affinity Purified Rabbit Polyclonal Antibody (Pab)**  
**Catalog # AP17084b**

**Specification**

---

**SH3GL1 Antibody (C-term) - Product Information**

Application	WB,E
Primary Accession	<a href="#">O99961</a>
Other Accession	<a href="#">NP_003016.1</a>
Reactivity	Human
Host	Rabbit
Clonality	Polyclonal
Isotype	Rabbit IgG
Calculated MW	41490
Antigen Region	242-270

**SH3GL1 Antibody (C-term) - Additional Information**

**Gene ID** 6455

**Other Names**

Endophilin-A2, EEN fusion partner of MLL, Endophilin-2, Extra eleven-nineteen leukemia fusion gene protein, EEN, SH3 domain protein 2B, SH3 domain-containing GRB2-like protein 1, SH3GL1, CNSA1, SH3D2B

**Target/Specificity**

This SH3GL1 antibody is generated from rabbits immunized with a KLH conjugated synthetic peptide between 242-270 amino acids from the C-terminal region of human SH3GL1.

**Dilution**

WB~~1:1000

**Format**

Purified polyclonal antibody supplied in PBS with 0.09% (W/V) sodium azide. This antibody is purified through a protein A column, followed by peptide affinity purification.

**Storage**

Maintain refrigerated at 2-8°C for up to 2 weeks. For long term storage store at -20°C in small aliquots to prevent freeze-thaw cycles.

**Precautions**

SH3GL1 Antibody (C-term) is for research use only and not for use in diagnostic or therapeutic procedures.

**SH3GL1 Antibody (C-term) - Protein Information**

**Name** SH3GL1

**Synonyms** CNSA1, SH3D2B

**Function** Implicated in endocytosis. May recruit other proteins to membranes with high curvature (By similarity).

**Cellular Location**

Cytoplasm. Early endosome membrane; Peripheral membrane protein. Cell projection, podosome. Note=Associated with postsynaptic endosomes in hippocampal neurons.

**Tissue Location**

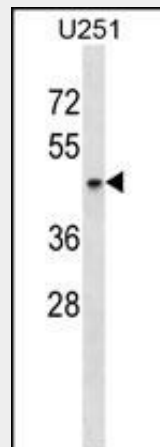
Ubiquitous. Higher expression in pancreas, placenta, prostate, testis and uterus

**SH3GL1 Antibody (C-term) - Protocols**

Provided below are standard protocols that you may find useful for product applications.

- [Western Blot](#)
- [Blocking Peptides](#)
- [Dot Blot](#)
- [Immunohistochemistry](#)
- [Immunofluorescence](#)
- [Immunoprecipitation](#)
- [Flow Cytometry](#)
- [Cell Culture](#)

**SH3GL1 Antibody (C-term) - Images**



SH3GL1 Antibody (C-term) (Cat. #AP17084b) western blot analysis in U251 cell line lysates (35ug/lane). This demonstrates the SH3GL1 antibody detected the SH3GL1 protein (arrow).

**SH3GL1 Antibody (C-term) - Background**

SH3GL1 is implicated in endocytosis. May recruit other proteins to membranes with high curvature (By similarity).

**SH3GL1 Antibody (C-term) - References**

Venkatesan, K., et al. Nat. Methods 6(1):83-90(2009)  
Sugiyama, N., et al. Mol. Cell Proteomics 6(6):1103-1109(2007)  
Ralser, M., et al. Hum. Mol. Genet. 14(19):2893-2909(2005)

Stelzl, U., et al. Cell 122(6):957-968(2005)

Lua, B.L., et al. J. Cell. Sci. 118 (PT 12), 2707-2721 (2005) :