

**FBX031 Antibody (Center)**  
**Affinity Purified Rabbit Polyclonal Antibody (Pab)**  
**Catalog # AP17068C**

**Specification**

---

**FBX031 Antibody (Center) - Product Information**

Application	WB,E
Primary Accession	<a href="#">O5XUX0</a>
Other Accession	<a href="#">B2RYN2</a> , <a href="#">O3TOF0</a> , <a href="#">NP_079011.3</a>
Reactivity	Human
Predicted	Mouse, Rat
Host	Rabbit
Clonality	Polyclonal
Isotype	Rabbit IgG
Calculated MW	60664
Antigen Region	310-338

**FBX031 Antibody (Center) - Additional Information**

**Gene ID** 79791

**Other Names**

F-box only protein 31, FBX031, FBX14, FBX31

**Target/Specificity**

This FBX031 antibody is generated from rabbits immunized with a KLH conjugated synthetic peptide between 310-338 amino acids from the Central region of human FBX031.

**Dilution**

WB~~1:1000

**Format**

Purified polyclonal antibody supplied in PBS with 0.09% (W/V) sodium azide. This antibody is purified through a protein A column, followed by peptide affinity purification.

**Storage**

Maintain refrigerated at 2-8°C for up to 2 weeks. For long term storage store at -20°C in small aliquots to prevent freeze-thaw cycles.

**Precautions**

FBX031 Antibody (Center) is for research use only and not for use in diagnostic or therapeutic procedures.

**FBX031 Antibody (Center) - Protein Information**

**Name** FBX031

**Synonyms** FBX14, FBX31

**Function** Component of some SCF (SKP1-cullin-F-box) protein ligase complex that plays a central role in G1 arrest following DNA damage. Specifically recognizes phosphorylated cyclin-D1 (CCND1), promoting its ubiquitination and degradation by the proteasome, resulting in G1 arrest. May act as a tumor suppressor.

**Tissue Location**

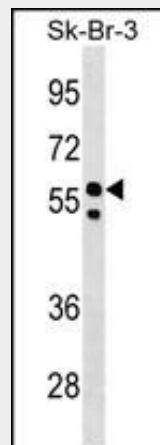
Highly expressed in brain. Expressed at moderate levels in most tissues, except bone marrow

**FBXO31 Antibody (Center) - Protocols**

Provided below are standard protocols that you may find useful for product applications.

- [Western Blot](#)
- [Blocking Peptides](#)
- [Dot Blot](#)
- [Immunohistochemistry](#)
- [Immunofluorescence](#)
- [Immunoprecipitation](#)
- [Flow Cytometry](#)
- [Cell Culture](#)

**FBXO31 Antibody (Center) - Images**



FBXO31 Antibody (Center) (Cat. #AP17068c) western blot analysis in SK-BR-3 cell line lysates (35ug/lane). This demonstrates the FBXO31 antibody detected the FBXO31 protein (arrow).

**FBXO31 Antibody (Center) - Background**

Members of the F-box protein family, such as FBXO31, are characterized by an approximately 40-amino acid F-box motif. SCF complexes, formed by SKP1 (MIM 601434), cullin (see CUL1; MIM 603134), and F-box proteins, act as protein-ubiquitin ligases. F-box proteins interact with SKP1 through the F box, and they interact with ubiquitination targets through other protein interaction domains (Jin et al., 2004 [PubMed 15520277]). [supplied by OMIM].

**FBXO31 Antibody (Center) - References**

Rivadeneira, F., et al. Nat. Genet. 41(11):1199-1206(2009)

Santra, M.K., et al. Nature 459(7247):722-725(2009)  
Kumar, R., et al. Cancer Res. 65(24):11304-11313(2005)  
Jin, J., et al. Genes Dev. 18(21):2573-2580(2004)  
Powell, J.A., et al. Genomics 80(3):303-310(2002)