

**SERINC3 Antibody (C-term)**  
**Affinity Purified Rabbit Polyclonal Antibody (Pab)**  
**Catalog # AP17065b**

**Specification**

---

**SERINC3 Antibody (C-term) - Product Information**

Application	WB,E
Primary Accession	<a href="#">O13530</a>
Other Accession	<a href="#">O9OZI9</a> , <a href="#">NP_945179.1</a> , <a href="#">NP_006802.1</a>
Reactivity	Human
Predicted	Mouse
Host	Rabbit
Clonality	Polyclonal
Isotype	Rabbit IgG
Calculated MW	52580
Antigen Region	373-400

**SERINC3 Antibody (C-term) - Additional Information**

**Gene ID** 10955

**Other Names**

Serine incorporator 3, Tumor differentially expressed protein 1, SERINC3, DIFF33, TDE1

**Target/Specificity**

This SERINC3 antibody is generated from rabbits immunized with a KLH conjugated synthetic peptide between 373-400 amino acids from the C-terminal region of human SERINC3.

**Dilution**

WB~~1:1000

**Format**

Purified polyclonal antibody supplied in PBS with 0.09% (W/V) sodium azide. This antibody is purified through a protein A column, followed by peptide affinity purification.

**Storage**

Maintain refrigerated at 2-8°C for up to 2 weeks. For long term storage store at -20°C in small aliquots to prevent freeze-thaw cycles.

**Precautions**

SERINC3 Antibody (C-term) is for research use only and not for use in diagnostic or therapeutic procedures.

**SERINC3 Antibody (C-term) - Protein Information**

**Name** SERINC3

**Synonyms** DIFF33, TDE1 {ECO:0000303|PubMed:1055979}

**Function** Restriction factor required to restrict infectivity of lentiviruses, such as HIV-1: acts by inhibiting an early step of viral infection. Impairs the penetration of the viral particle into the cytoplasm (PubMed:[26416733](#), PubMed:[26416734](#)).

#### Cellular Location

Cell membrane {ECO:0000250|UniProtKB:Q86VE9}; Multi-pass membrane protein. Golgi apparatus membrane {ECO:0000250|UniProtKB:Q9QZI9}; Multi-pass membrane protein {ECO:0000250|UniProtKB:Q9QZI9}

#### Tissue Location

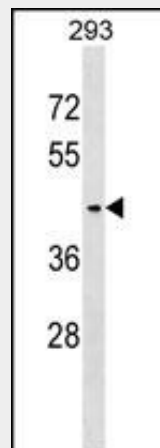
Ubiquitous. Expression levels were increased fourfold to tenfold in lung tumor tissues compared with normal pulmonary tissues.

### SERINC3 Antibody (C-term) - Protocols

Provided below are standard protocols that you may find useful for product applications.

- [Western Blot](#)
- [Blocking Peptides](#)
- [Dot Blot](#)
- [Immunohistochemistry](#)
- [Immunofluorescence](#)
- [Immunoprecipitation](#)
- [Flow Cytometry](#)
- [Cell Culture](#)

### SERINC3 Antibody (C-term) - Images



SERINC3 Antibody (C-term) (Cat. #AP17065b) western blot analysis in 293 cell line lysates (35ug/lane). This demonstrates the SERINC3 antibody detected the SERINC3 protein (arrow).

### SERINC3 Antibody (C-term) - Background

SERINC3 may be involved in cellular transformation.

### SERINC3 Antibody (C-term) - References

Ewing, R.M., et al. Mol. Syst. Biol. 3, 89 (2007) :  
Bossolasco, M., et al. Oncogene 25(33):4549-4558(2006)  
Deloukas, P., et al. Nature 414(6866):865-871(2001)

Bossolasco, M., et al. Mol. Carcinog. 26(3):189-200(1999)

Adams, M.D., et al. Nature 377 (6547 SUPPL), 3-174 (1995) :