

RHOBTB1 Antibody (C-term)
Affinity Purified Rabbit Polyclonal Antibody (Pab)
Catalog # AP17063B

Specification

RHOBTB1 Antibody (C-term) - Product Information

Application	WB,E
Primary Accession	O94844
Other Accession	O9DAK3 , NP_055651.1
Reactivity	Human
Predicted	Mouse
Host	Rabbit
Clonality	Polyclonal
Isotype	Rabbit IgG
Calculated MW	79417
Antigen Region	623-650

RHOBTB1 Antibody (C-term) - Additional Information

Gene ID 9886

Other Names

Rho-related BTB domain-containing protein 1, RHOBTB1, KIAA0740

Target/Specificity

This RHOBTB1 antibody is generated from rabbits immunized with a KLH conjugated synthetic peptide between 623-650 amino acids from the C-terminal region of human RHOBTB1.

Dilution

WB~~1:1000

Format

Purified polyclonal antibody supplied in PBS with 0.09% (W/V) sodium azide. This antibody is purified through a protein A column, followed by peptide affinity purification.

Storage

Maintain refrigerated at 2-8°C for up to 2 weeks. For long term storage store at -20°C in small aliquots to prevent freeze-thaw cycles.

Precautions

RHOBTB1 Antibody (C-term) is for research use only and not for use in diagnostic or therapeutic procedures.

RHOBTB1 Antibody (C-term) - Protein Information

Name RHOBTB1

Synonyms KIAA0740

Tissue Location

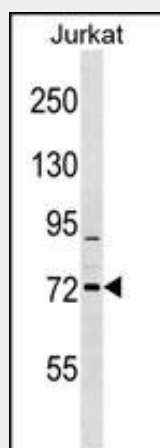
Ubiquitous, with highest levels in skeletal muscle, placenta, testis, stomach, and kidney, followed by uterus and adrenal gland. Expressed in a variety of fetal tissues

RHOBTB1 Antibody (C-term) - Protocols

Provided below are standard protocols that you may find useful for product applications.

- [Western Blot](#)
- [Blocking Peptides](#)
- [Dot Blot](#)
- [Immunohistochemistry](#)
- [Immunofluorescence](#)
- [Immunoprecipitation](#)
- [Flow Cytometry](#)
- [Cell Culture](#)

RHOBTB1 Antibody (C-term) - Images



RHOBTB1 Antibody (C-term) (Cat. #AP17063b) western blot analysis in Jurkat cell line lysates (35ug/lane). This demonstrates the RHOBTB1 antibody detected the RHOBTB1 protein (arrow).

RHOBTB1 Antibody (C-term) - Background

The protein encoded by this gene belongs to the Rho family of the small GTPase superfamily. It contains a GTPase domain, a proline-rich region, a tandem of 2 BTB (broad complex, tramtrack, and bric-a-brac) domains, and a conserved C-terminal region. The protein plays a role in small GTPase-mediated signal transduction and the organization of the actin filament system. Alternate splicing results in multiple transcript variants. [provided by RefSeq].

RHOBTB1 Antibody (C-term) - References

Newton-Cheh, C., et al. Nat. Genet. (2009) In press :
Grupe, A., et al. Am. J. Hum. Genet. 78(1):78-88(2006)
Beder, L.B., et al. J. Cancer Res. Clin. Oncol. 132(1):19-27(2006)
Aspenstrom, P., et al. Biochem. J. 377 (PT 2), 327-337 (2004) :
Ramos, S., et al. Gene 298(2):147-157(2002)