

**SUOX Antibody (Center)**  
**Affinity Purified Rabbit Polyclonal Antibody (Pab)**  
**Catalog # AP17055c**

**Specification**

---

**SUOX Antibody (Center) - Product Information**

Application	WB,E
Primary Accession	<a href="#">P51687</a>
Other Accession	<a href="#">Q60HD0</a> , <a href="#">NP_001027559.1</a> , <a href="#">NP_001027558.1</a>
Reactivity	Human
Predicted	Monkey
Host	Rabbit
Clonality	Polyclonal
Isotype	Rabbit IgG
Calculated MW	60283
Antigen Region	160-187

**SUOX Antibody (Center) - Additional Information**

**Gene ID** 6821

**Other Names**

Sulfite oxidase, mitochondrial, SUOX

**Target/Specificity**

This SUOX antibody is generated from rabbits immunized with a KLH conjugated synthetic peptide between 160-187 amino acids from the Central region of human SUOX.

**Dilution**

WB~~1:1000

**Format**

Purified polyclonal antibody supplied in PBS with 0.09% (W/V) sodium azide. This antibody is purified through a protein A column, followed by peptide affinity purification.

**Storage**

Maintain refrigerated at 2-8°C for up to 2 weeks. For long term storage store at -20°C in small aliquots to prevent freeze-thaw cycles.

**Precautions**

SUOX Antibody (Center) is for research use only and not for use in diagnostic or therapeutic procedures.

**SUOX Antibody (Center) - Protein Information**

**Name** SUOX

**Function** Catalyzes the oxidation of sulfite to sulfate, the terminal reaction in the oxidative

degradation of sulfur-containing amino acids.

#### Cellular Location

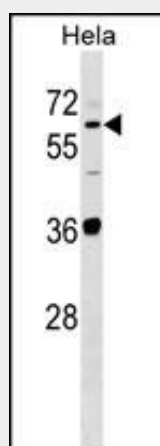
Mitochondrion intermembrane space {ECO:0000250|UniProtKB:Q07116}

#### SUOX Antibody (Center) - Protocols

Provided below are standard protocols that you may find useful for product applications.

- [Western Blot](#)
- [Blocking Peptides](#)
- [Dot Blot](#)
- [Immunohistochemistry](#)
- [Immunofluorescence](#)
- [Immunoprecipitation](#)
- [Flow Cytometry](#)
- [Cell Culture](#)

#### SUOX Antibody (Center) - Images



SUOX Antibody (Center) (Cat. #AP17055c) western blot analysis in HeLa cell line lysates (35ug/lane). This demonstrates the SUOX antibody detected the SUOX protein (arrow).

#### SUOX Antibody (Center) - Background

Sulfite oxidase is a homodimeric protein localized to the intermembrane space of mitochondria. Each subunit contains a heme domain and a molybdopterin-binding domain. The enzyme catalyzes the oxidation of sulfite to sulfate, the final reaction in the oxidative degradation of the sulfur amino acids cysteine and methionine. Sulfite oxidase deficiency results in neurological abnormalities which are often fatal at an early age. Alternative splicing results in multiple transcript variants encoding identical proteins.

#### SUOX Antibody (Center) - References

Rajapakshe, A., et al. *Biochemistry* 49(25):5154-5159(2010)  
Johnson-Winters, K., et al. *Biochemistry* 49(6):1290-1296(2010)  
Neumann, M., et al. *FEBS J.* 275(22):5678-5689(2008)

Astashkin, A.V., et al. J. Am. Chem. Soc. 130(26):8471-8480(2008)  
Hakonarson, H., et al. Diabetes 57(4):1143-1146(2008)