

ESR2 Antibody (Center)
Purified Rabbit Polyclonal Antibody (Pab)
Catalog # AP1702c

Specification

ESR2 Antibody (Center) - Product Information

Application	WB, FC,E
Primary Accession	O92731
Other Accession	O62986 , O9XSW2 , O9PTU5 , O9XSB5 , O9TU15
Reactivity	Human
Predicted	Bovine, Chicken, Pig, Rat, Sheep
Host	Rabbit
Clonality	Polyclonal
Isotype	Rabbit IgG
Antigen Region	369-397

ESR2 Antibody (Center) - Additional Information

Gene ID 2100

Other Names

Estrogen receptor beta, ER-beta, Nuclear receptor subfamily 3 group A member 2, ESR2, ESTRB, NR3A2

Target/Specificity

This ESR2 antibody is generated from rabbits immunized with a KLH conjugated synthetic peptide between 369-397 amino acids from the Central region of human ESR2.

Dilution

WB~~1:1000
FC~~1:10~50

Format

Purified polyclonal antibody supplied in PBS with 0.09% (W/V) sodium azide. This antibody is prepared by Saturated Ammonium Sulfate (SAS) precipitation followed by dialysis against PBS.

Storage

Maintain refrigerated at 2-8°C for up to 2 weeks. For long term storage store at -20°C in small aliquots to prevent freeze-thaw cycles.

Precautions

ESR2 Antibody (Center) is for research use only and not for use in diagnostic or therapeutic procedures.

ESR2 Antibody (Center) - Protein Information

Name ESR2

Synonyms ESTRB, NR3A2

Function Nuclear hormone receptor. Binds estrogens with an affinity similar to that of ESR1/ER-alpha, and activates expression of reporter genes containing estrogen response elements (ERE) in an estrogen- dependent manner (PubMed:[20074560](#)).

Cellular Location

Nucleus {ECO:0000255|PROSITE-ProRule:PRU00407, ECO:0000269|PubMed:19126643, ECO:0000269|PubMed:20074560}

Tissue Location

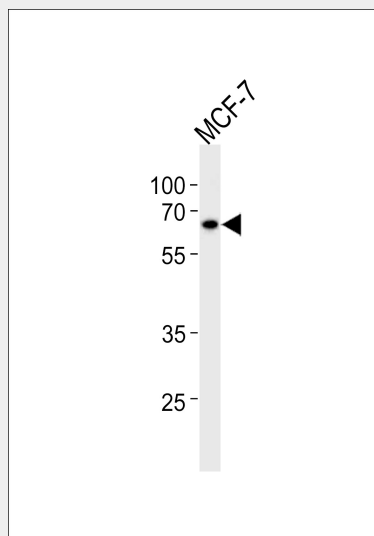
[Isoform 1]: Expressed in testis and ovary, and at a lower level in heart, brain, placenta, liver, skeletal muscle, spleen, thymus, prostate, colon, bone marrow, mammary gland and uterus Also found in uterine bone, breast, and ovarian tumor cell lines, but not in colon and liver tumors. [Isoform 4]: Expressed in the testis. [Isoform 6]: Expressed in testis, placenta, skeletal muscle, spleen and leukocytes, and at a lower level in heart, lung, liver, kidney, pancreas, thymus, prostate, colon, small intestine, bone marrow, mammary gland and uterus. Not expressed in brain.

ESR2 Antibody (Center) - Protocols

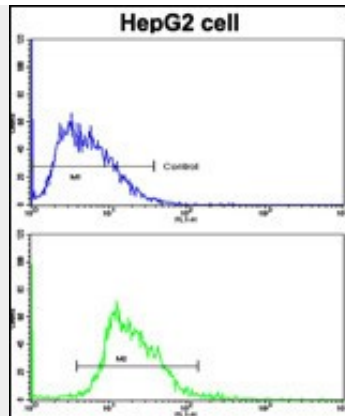
Provided below are standard protocols that you may find useful for product applications.

- [Western Blot](#)
- [Blocking Peptides](#)
- [Dot Blot](#)
- [Immunohistochemistry](#)
- [Immunofluorescence](#)
- [Immunoprecipitation](#)
- [Flow Cytometry](#)
- [Cell Culture](#)

ESR2 Antibody (Center) - Images



ESR2 Antibody (Center) (Cat. #AP1702c) western blot analysis in MCF-7 cell line lysates (35ug/lane). This demonstrates the ESR2 antibody detected the ESR2 protein (arrow).



Flow cytometric analysis of HepG2 cells using ESR2 Antibody (Center)(bottom histogram) compared to a negative control cell (top histogram). FITC-conjugated goat-anti-rabbit secondary antibodies were used for the analysis.

ESR2 Antibody (Center) - Background

ESR2 is a nuclear hormone receptor. The protein binds estrogens with an affinity similar to that of ESR1, and activates expression of reporter genes containing estrogen response elements (ERE) in an estrogen-dependent manner.

ESR2 Antibody (Center) - References

Chen H., Lin R.J. Cell 90:569-580(1997)
Caira F., Antonson P.J. Biol. Chem. 275:5308-5317(2000)
Bu H., Kashireddy P. Biochem. Biophys. Res. Commun. 317:54-59(2004)

ESR2 Antibody (Center) - Citations

- [β-Estradiol antagonizes the inhibitory effects of caffeine in BMMSCs via the ERβ-mediated cAMP-dependent PKA pathway.](#)
- [Pregnancy serum facilitates hepatitis E virus replication in vitro.](#)