

**FCN1 Antibody (C-term)**  
**Affinity Purified Rabbit Polyclonal Antibody (Pab)**  
**Catalog # AP17029B**

**Specification**

---

**FCN1 Antibody (C-term) - Product Information**

Application	WB,E
Primary Accession	<a href="#">O00602</a>
Other Accession	<a href="#">NP_001994.2</a>
Reactivity	Human
Host	Rabbit
Clonality	Polyclonal
Isotype	Rabbit IgG
Calculated MW	35078
Antigen Region	239-267

**FCN1 Antibody (C-term) - Additional Information**

**Gene ID** 2219

**Other Names**

Ficolin-1, Collagen/fibrinogen domain-containing protein 1, Ficolin-A, Ficolin-alpha, M-ficolin, FCN1, FCNM

**Target/Specificity**

This FCN1 antibody is generated from rabbits immunized with a KLH conjugated synthetic peptide between 239-267 amino acids from the C-terminal region of human FCN1.

**Dilution**

WB~~1:1000

**Format**

Purified polyclonal antibody supplied in PBS with 0.09% (W/V) sodium azide. This antibody is purified through a protein A column, followed by peptide affinity purification.

**Storage**

Maintain refrigerated at 2-8°C for up to 2 weeks. For long term storage store at -20°C in small aliquots to prevent freeze-thaw cycles.

**Precautions**

FCN1 Antibody (C-term) is for research use only and not for use in diagnostic or therapeutic procedures.

**FCN1 Antibody (C-term) - Protein Information**

**Name** FCN1

**Synonyms** FCNM

**Function** Extracellular lectin functioning as a pattern-recognition receptor in innate immunity. Binds the sugar moieties of pathogen-associated molecular patterns (PAMPs) displayed on microbes and activates the lectin pathway of the complement system. May also activate monocytes through a G protein-coupled receptor, FFAR2, inducing the secretion of interleukin-8/IL-8 (PubMed:[21037097](#)). Binds preferentially to 9-O-acetylated 2-6-linked sialic acid derivatives and to various glycans containing sialic acid engaged in a 2-3 linkage.

#### Cellular Location

Secreted. Cell membrane; Peripheral membrane protein; Extracellular side. Note=Found on the monocyte and granulocyte surface (PubMed:20400674)

#### Tissue Location

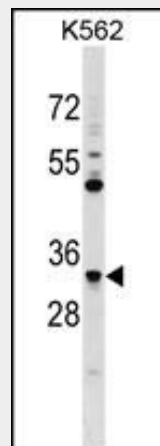
Peripheral blood leukocytes, monocytes and granulocytes. Also detected in spleen, lung, and thymus, may be due to the presence of tissue macrophages or trapped blood in these tissues Not detected on lymphocytes.

### FCN1 Antibody (C-term) - Protocols

Provided below are standard protocols that you may find useful for product applications.

- [Western Blot](#)
- [Blocking Peptides](#)
- [Dot Blot](#)
- [Immunohistochemistry](#)
- [Immunofluorescence](#)
- [Immunoprecipitation](#)
- [Flow Cytometry](#)
- [Cell Culture](#)

### FCN1 Antibody (C-term) - Images



FCN1 Antibody (C-term) (Cat. #AP17029b) western blot analysis in K562 cell line lysates (35ug/lane). This demonstrates the FCN1 antibody detected the FCN1 protein (arrow).

### FCN1 Antibody (C-term) - Background

The ficolin family of proteins are characterized by the presence of a leader peptide, a short N-terminal segment, followed by a collagen-like region, and a C-terminal fibrinogen-like domain. The collagen-like and the fibrinogen-like domains are also found

separately in other proteins such as complement protein C1q, C-type lectins known as collectins, and tenascins. However, all these proteins recognize different targets, and are functionally distinct. Ficolin 1 encoded by FCN1 is predominantly expressed in the peripheral blood leukocytes, and has been postulated to function as a plasma protein with elastin-binding activity.

#### **FCN1 Antibody (C-term) - References**

Honore, C., et al. J. Leukoc. Biol. 88(1):145-158(2010)  
Davila, S., et al. Genes Immun. 11(3):232-238(2010)  
Gout, E., et al. J. Biol. Chem. 285(9):6612-6622(2010)  
Wittenborn, T., et al. J Innate Immun 2(2):167-180(2010)  
Tanio, M., et al. Mol. Immunol. 47 (2-3), 215-221 (2009) :