

**CBX4 Antibody (N-term)**  
**Affinity Purified Rabbit Polyclonal Antibody (Pab)**  
**Catalog # AP17028A****Specification**

---

**CBX4 Antibody (N-term) - Product Information**

|                   |  |
|-------------------|--|
| Application       | <b>WB,E</b>  |
| Primary Accession | <a href="#">O00257</a>                               |
| Other Accession   | <a href="#">O55187</a> , <a href="#">NP_003646.2</a> |
| Reactivity        | <b>Human</b>   |
| Predicted         | <b>Mouse</b>   |
| Host              | <b>Rabbit</b>  |
| Clonality         | <b>Polyclonal</b>                                    |
| Isotype           | <b>Rabbit IgG</b>                                    |
| Calculated MW     | <b>61368</b>   |
| Antigen Region    | <b>1-30</b>  |

**CBX4 Antibody (N-term) - Additional Information****Gene ID** 8535**Other Names**

E3 SUMO-protein ligase CBX4, 632-, Chromobox protein homolog 4, Polycomb 2 homolog, Pc2, hPc2, CBX4

**Target/Specificity**

This CBX4 antibody is generated from rabbits immunized with a KLH conjugated synthetic peptide between 1-30 amino acids from the N-terminal region of human CBX4.

**Dilution**

WB~~1:1000

**Format**

Purified polyclonal antibody supplied in PBS with 0.09% (W/V) sodium azide. This antibody is purified through a protein A column, followed by peptide affinity purification.

**Storage**

Maintain refrigerated at 2-8°C for up to 2 weeks. For long term storage store at -20°C in small aliquots to prevent freeze-thaw cycles.

**Precautions**

CBX4 Antibody (N-term) is for research use only and not for use in diagnostic or therapeutic procedures.

**CBX4 Antibody (N-term) - Protein Information****Name** CBX4

**Function** E3 SUMO-protein ligase which facilitates SUMO1 conjugation by UBE2I (PubMed:[12679040](#)). Involved in the sumoylation of HNRNPK, a p53/TP53 transcriptional coactivator, hence indirectly regulates p53/TP53 transcriptional activation resulting in p21/CDKN1A expression. Monosumoylates ZNF131 (PubMed:[22825850](#)).

**Cellular Location**

Nucleus. Nucleus speckle. Note=Localization to nuclear polycomb bodies is required for ZNF131 sumoylation (PubMed:22467880). Localized in distinct foci on chromatin (PubMed:18927235)

**Tissue Location**

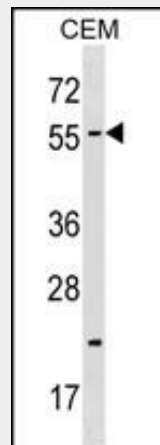
Ubiquitous.

**CBX4 Antibody (N-term) - Protocols**

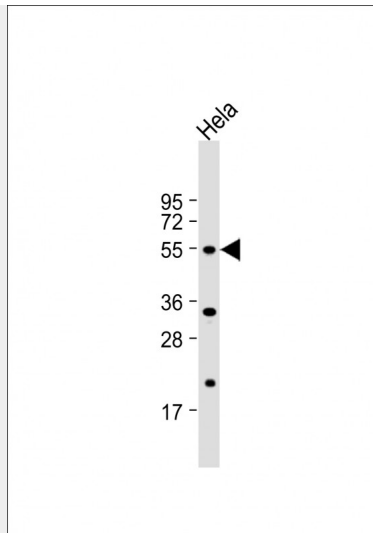
Provided below are standard protocols that you may find useful for product applications.

- [Western Blot](#)
- [Blocking Peptides](#)
- [Dot Blot](#)
- [Immunohistochemistry](#)
- [Immunofluorescence](#)
- [Immunoprecipitation](#)
- [Flow Cytometry](#)
- [Cell Culture](#)

**CBX4 Antibody (N-term) - Images**



CBX4 Antibody (N-term) (Cat. #AP17028a) western blot analysis in CEM cell line lysates (35ug/lane). This demonstrates the CBX4 antibody detected the CBX4 protein (arrow).



Anti-CBX4 Antibody (N-term) at 1:1000 dilution + HeLa whole cell lysate Lysates/proteins at 20  $\mu$ g per lane. Secondary Goat Anti-Rabbit IgG, (H+L), Peroxidase conjugated at 1/10000 dilution. Predicted band size : 61 kDa Blocking/Dilution buffer: 5% NFDN/TBST.

#### **CBX4 Antibody (N-term) - Background**

E3 SUMO-protein ligase which facilitates SUMO1 conjugation by UBE2I. Component of the Polycomb group (PcG) multiprotein PRC1 complex, a complex required to maintain the transcriptionally repressive state of many genes, including Hox genes, throughout development. PcG PRC1 complex acts via chromatin remodeling and modification of histones; it mediates monoubiquitination of histone H2A 'Lys-119', rendering chromatin heritably changed in its expressibility.

#### **CBX4 Antibody (N-term) - References**

- Seong, I.S., et al. Hum. Mol. Genet. 19(4):573-583(2010)
- Zhou, W., et al. BMB Rep 42(3):154-159(2009)
- Liang, G., et al. Hum. Mol. Genet. 17(8):1109-1119(2008)
- Kim, S.H., et al. Int. J. Biochem. Cell Biol. 40(11):2462-2471(2008)
- Kabil, O., et al. Biochemistry 45(45):13528-13536(2006)