

CD1D Antibody (Center)
Affinity Purified Rabbit Polyclonal Antibody (Pab)
Catalog # AP17014c

Specification

CD1D Antibody (Center) - Product Information

| | |
|-------------------|-----------------------------|
| Application | WB,E |
| Primary Accession | P15813 |
| Other Accession | NP_001757.1 |
| Reactivity | Human |
| Host | Rabbit |
| Clonality | Polyclonal |
| Isotype | Rabbit IgG |
| Calculated MW | 37717 |
| Antigen Region | 177-206 |

CD1D Antibody (Center) - Additional Information

Gene ID 912

Other Names

Antigen-presenting glycoprotein CD1d, R3G1, CD1d, CD1D

Target/Specificity

This CD1D antibody is generated from rabbits immunized with a KLH conjugated synthetic peptide between 177-206 amino acids from the Central region of human CD1D.

Dilution

WB~~1:1000

Format

Purified polyclonal antibody supplied in PBS with 0.09% (W/V) sodium azide. This antibody is purified through a protein A column, followed by peptide affinity purification.

Storage

Maintain refrigerated at 2-8°C for up to 2 weeks. For long term storage store at -20°C in small aliquots to prevent freeze-thaw cycles.

Precautions

CD1D Antibody (Center) is for research use only and not for use in diagnostic or therapeutic procedures.

CD1D Antibody (Center) - Protein Information

Name CD1D

Function Antigen-presenting protein that binds self and non-self glycolipids and presents them to T-cell receptors on natural killer T- cells.

Cellular Location

Cell membrane; Single-pass type I membrane protein. Basolateral cell membrane; Single-pass type I membrane protein. Endosome membrane; Single-pass type I membrane protein. Lysosome membrane; Single-pass type I membrane protein. Endoplasmic reticulum membrane; Single-pass type I membrane protein. Note=Subject to intracellular trafficking between the cell membrane, endosomes and lysosomes.

Tissue Location

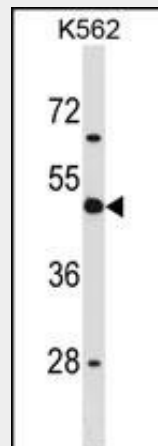
Expressed on cortical thymocytes, on certain T-cell leukemias, and in various other tissues

CD1D Antibody (Center) - Protocols

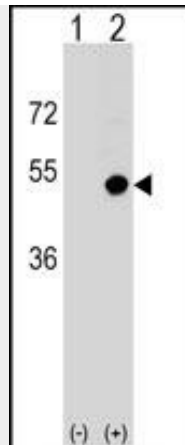
Provided below are standard protocols that you may find useful for product applications.

- [Western Blot](#)
- [Blocking Peptides](#)
- [Dot Blot](#)
- [Immunohistochemistry](#)
- [Immunofluorescence](#)
- [Immunoprecipitation](#)
- [Flow Cytometry](#)
- [Cell Culture](#)

CD1D Antibody (Center) - Images



CD1D Antibody (Center) (Cat. #AP17014c) western blot analysis in K562 cell line lysates (35ug/lane). This demonstrates the CD1D antibody detected the CD1D protein (arrow).



Western blot analysis of CD1D (arrow) using rabbit polyclonal CD1D Antibody (Center) (Cat. #AP17014c). 293 cell lysates (2 ug/lane) either nontransfected (Lane 1) or transiently transfected (Lane 2) with the CD1D gene.

CD1D Antibody (Center) - Background

This gene encodes a divergent member of the CD1 family of transmembrane glycoproteins, which are structurally related to the major histocompatibility complex (MHC) proteins and form heterodimers with beta-2-microglobulin. The CD1 proteins mediate the presentation of primarily lipid and glycolipid antigens of self or microbial origin to T cells. The human genome contains five CD1 family genes organized in a cluster on chromosome 1. The CD1 family members are thought to differ in their cellular localization and specificity for particular lipid ligands. The protein encoded by this gene localizes to late endosomes and lysosomes via a tyrosine-based motif in the cytoplasmic tail.

CD1D Antibody (Center) - References

Miura, S., et al. *J. Virol.* 84(22):11614-11623(2010)
Moll, M., et al. *Blood* 116(11):1876-1884(2010)
Liu, J., et al. *J. Immunol.* 184(9):4973-4981(2010)
Davila, S., et al. *Genes Immun.* 11(3):232-238(2010)
Brandl, C., et al. *PLoS ONE* 5 (5), E10800 (2010) :