

STX2 Antibody (N-term)
Affinity Purified Rabbit Polyclonal Antibody (Pab)
Catalog # AP16995A

Specification

STX2 Antibody (N-term) - Product Information

Application	WB,E
Primary Accession	P32856
Other Accession	NP_919337.1 , NP_001971.2
Reactivity	Human
Host	Rabbit
Clonality	Polyclonal
Isotype	Rabbit IgG
Calculated MW	33341
Antigen Region	60-89

STX2 Antibody (N-term) - Additional Information

Gene ID 2054

Other Names

Syntaxin-2, Epimorphin, STX2, EPIM, STX2A, STX2B, STX2C

Target/Specificity

This STX2 antibody is generated from rabbits immunized with a KLH conjugated synthetic peptide between 60-89 amino acids from the N-terminal region of human STX2.

Dilution

WB~~1:1000

Format

Purified polyclonal antibody supplied in PBS with 0.09% (W/V) sodium azide. This antibody is purified through a protein A column, followed by peptide affinity purification.

Storage

Maintain refrigerated at 2-8°C for up to 2 weeks. For long term storage store at -20°C in small aliquots to prevent freeze-thaw cycles.

Precautions

STX2 Antibody (N-term) is for research use only and not for use in diagnostic or therapeutic procedures.

STX2 Antibody (N-term) - Protein Information

Name STX2

Synonyms EPIM, STX2A, STX2B, STX2C

Function Essential for epithelial morphogenesis. May mediate Ca(2+)- regulation of exocytosis acrossomal reaction in sperm.

Cellular Location

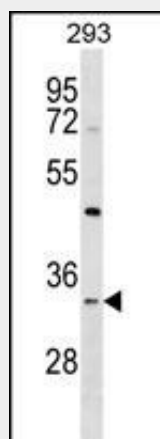
Membrane; Single-pass type IV membrane protein.

STX2 Antibody (N-term) - Protocols

Provided below are standard protocols that you may find useful for product applications.

- [Western Blot](#)
- [Blocking Peptides](#)
- [Dot Blot](#)
- [Immunohistochemistry](#)
- [Immunofluorescence](#)
- [Immunoprecipitation](#)
- [Flow Cytometry](#)
- [Cell Culture](#)

STX2 Antibody (N-term) - Images



STX2 Antibody (N-term) (Cat. #AP16995a) western blot analysis in 293 cell line lysates (35ug/lane). This demonstrates the STX2 antibody detected the STX2 protein (arrow).

STX2 Antibody (N-term) - Background

The product of this gene belongs to the syntaxin/epimorphin family of proteins. The syntaxins are a large protein family implicated in the targeting and fusion of intracellular transport vesicles. The product of this gene regulates epithelial-mesenchymal interactions and epithelial cell morphogenesis and activation. Alternatively spliced transcript variants encoding different isoforms have been identified.

STX2 Antibody (N-term) - References

- Chen, C.S., et al. J. Biol. Chem. 284(11):6877-6884(2009)
Okugawa, Y., et al. J. Invest. Dermatol. 128(8):1884-1893(2008)
Flaumenhaft, R., et al. Blood 110(5):1492-1501(2007)
Low, S.H., et al. Mol. Biol. Cell 17(2):977-989(2006)

Band, A.M., et al. BMC Cell Biol. 6 (1), 26 (2005) :