

MS4A1 Antibody (C-term)
Affinity Purified Rabbit Polyclonal Antibody (Pab)
Catalog # AP16973b

Specification

MS4A1 Antibody (C-term) - Product Information

Application	WB,E
Primary Accession	P11836
Other Accession	NP_068769.2 , NP_690605.1
Reactivity	Human
Host	Rabbit
Clonality	Polyclonal
Isotype	Rabbit IgG
Calculated MW	33077
Antigen Region	216-244

MS4A1 Antibody (C-term) - Additional Information

Gene ID 931

Other Names

B-lymphocyte antigen CD20, B-lymphocyte surface antigen B1, Bp35, Leukocyte surface antigen Leu-16, Membrane-spanning 4-domains subfamily A member 1, CD20, MS4A1, CD20

Target/Specificity

This MS4A1 antibody is generated from rabbits immunized with a KLH conjugated synthetic peptide between 216-244 amino acids from the C-terminal region of human MS4A1.

Dilution

WB~~1:1000

Format

Purified polyclonal antibody supplied in PBS with 0.09% (W/V) sodium azide. This antibody is purified through a protein A column, followed by peptide affinity purification.

Storage

Maintain refrigerated at 2-8°C for up to 2 weeks. For long term storage store at -20°C in small aliquots to prevent freeze-thaw cycles.

Precautions

MS4A1 Antibody (C-term) is for research use only and not for use in diagnostic or therapeutic procedures.

MS4A1 Antibody (C-term) - Protein Information

Name MS4A1

Synonyms CD20

Function B-lymphocyte-specific membrane protein that plays a role in the regulation of cellular calcium influx necessary for the development, differentiation, and activation of B-lymphocytes (PubMed:[12920111](#), PubMed:[3925015](#), PubMed:[7684739](#)). Functions as a store-operated calcium (SOC) channel component promoting calcium influx after activation by the B-cell receptor/BCR (PubMed:[12920111](#), PubMed:[18474602](#), PubMed:[7684739](#)).

Cellular Location

Cell membrane; Multi-pass membrane protein. Cell membrane; Lipid-anchor. Note=Constitutively associated with membrane rafts.

Tissue Location

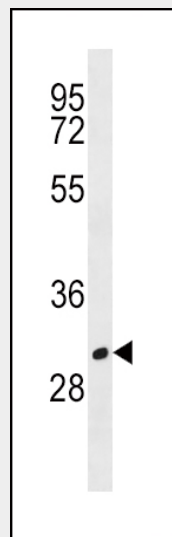
Expressed on B-cells.

MS4A1 Antibody (C-term) - Protocols

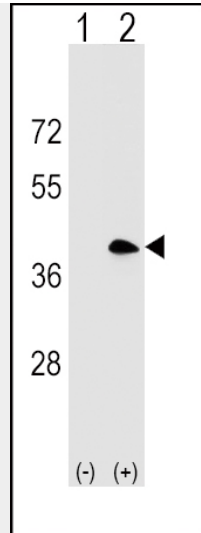
Provided below are standard protocols that you may find useful for product applications.

- [Western Blot](#)
- [Blocking Peptides](#)
- [Dot Blot](#)
- [Immunohistochemistry](#)
- [Immunofluorescence](#)
- [Immunoprecipitation](#)
- [Flow Cytometry](#)
- [Cell Culture](#)

MS4A1 Antibody (C-term) - Images



MS4A1 Antibody (C-term) (Cat. #AP16973b) western blot analysis in HL-60 cell line lysates (35ug/lane). This demonstrates the MS4A1 antibody detected the MS4A1 protein (arrow).



Western blot analysis of MS4A1 (arrow) using rabbit polyclonal MS4A1 Antibody (C-term) (Cat. #AP16973b). 293 cell lysates (2 ug/lane) either nontransfected (Lane 1) or transiently transfected (Lane 2) with the MS4A1 gene.

MS4A1 Antibody (C-term) - Background

This gene encodes a member of the membrane-spanning 4A gene family. Members of this nascent protein family are characterized by common structural features and similar intron/exon splice boundaries and display unique expression patterns among hematopoietic cells and nonlymphoid tissues. This gene encodes a B-lymphocyte surface molecule which plays a role in the development and differentiation of B-cells into plasma cells. This family member is localized to 11q12, among a cluster of family members. Alternative splicing of this gene results in two transcript variants which encode the same protein.

MS4A1 Antibody (C-term) - References

Weber, M.S., et al. *Ann. Neurol.* 68(3):369-383(2010)
Wu, D., et al. *Am. J. Clin. Pathol.* 134(2):258-265(2010)
de Haij, S., et al. *Cancer Res.* 70(8):3209-3217(2010)
Beers, S.A., et al. *Semin. Hematol.* 47(2):107-114(2010)
Davila, S., et al. *Genes Immun.* 11(3):232-238(2010)