

MAGEB16 Antibody (C-term)
Affinity Purified Rabbit Polyclonal Antibody (Pab)
Catalog # AP16966b

Specification

MAGEB16 Antibody (C-term) - Product Information

Application	WB,E
Primary Accession	A2A368
Other Accession	NP_001093391.1
Reactivity	Human
Host	Rabbit
Clonality	Polyclonal
Isotype	Rabbit IgG
Calculated MW	36178
Antigen Region	229-258

MAGEB16 Antibody (C-term) - Additional Information

Gene ID 139604

Other Names

Melanoma-associated antigen B16, MAGE-B16 antigen, MAGEB16

Target/Specificity

This MAGEB16 antibody is generated from rabbits immunized with a KLH conjugated synthetic peptide between 229-258 amino acids from the C-terminal region of human MAGEB16.

Dilution

WB~~1:1000

Format

Purified polyclonal antibody supplied in PBS with 0.09% (W/V) sodium azide. This antibody is purified through a protein A column, followed by peptide affinity purification.

Storage

Maintain refrigerated at 2-8°C for up to 2 weeks. For long term storage store at -20°C in small aliquots to prevent freeze-thaw cycles.

Precautions

MAGEB16 Antibody (C-term) is for research use only and not for use in diagnostic or therapeutic procedures.

MAGEB16 Antibody (C-term) - Protein Information

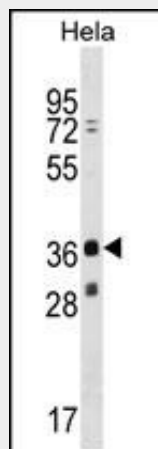
Name MAGEB16

MAGEB16 Antibody (C-term) - Protocols

Provided below are standard protocols that you may find useful for product applications.

- [Western Blot](#)
- [Blocking Peptides](#)
- [Dot Blot](#)
- [Immunohistochemistry](#)
- [Immunofluorescence](#)
- [Immunoprecipitation](#)
- [Flow Cytometry](#)
- [Cell Culture](#)

MAGEB16 Antibody (C-term) - Images



MAGEB16 Antibody (C-term) (Cat. #AP16966b) western blot analysis in HeLa cell line lysates (35ug/lane). This demonstrates the MAGEB16 antibody detected the MAGEB16 protein (arrow).

MAGEB16 Antibody (C-term) - References

Ross, M.T., et al. Nature 434(7031):325-337(2005)
Chomez, P., et al. Cancer Res. 61(14):5544-5551(2001)