

**YIPF3 Antibody (C-term)**  
**Affinity Purified Rabbit Polyclonal Antibody (Pab)**  
**Catalog # AP16954b**

**Specification**

---

**YIPF3 Antibody (C-term) - Product Information**

Application	WB,E
Primary Accession	<a href="#">O9GZM5</a>
Other Accession	<a href="#">NP_056203.2</a>
Reactivity	Human, Mouse
Host	Rabbit
Clonality	Polyclonal
Isotype	Rabbit IgG
Calculated MW	38248
Antigen Region	292-321

**YIPF3 Antibody (C-term) - Additional Information**

**Gene ID** 25844

**Other Names**

Protein YIPF3, Killer lineage protein 1, Natural killer cell-specific antigen KLIP1, YIP1 family member 3, Protein YIPF3, 36 kDa form III, YIPF3, C6orf109, KLIP1

**Target/Specificity**

This YIPF3 antibody is generated from rabbits immunized with a KLH conjugated synthetic peptide between 292-321 amino acids from the C-terminal region of human YIPF3.

**Dilution**

WB~~1:1000

**Format**

Purified polyclonal antibody supplied in PBS with 0.09% (W/V) sodium azide. This antibody is purified through a protein A column, followed by peptide affinity purification.

**Storage**

Maintain refrigerated at 2-8°C for up to 2 weeks. For long term storage store at -20°C in small aliquots to prevent freeze-thaw cycles.

**Precautions**

YIPF3 Antibody (C-term) is for research use only and not for use in diagnostic or therapeutic procedures.

**YIPF3 Antibody (C-term) - Protein Information**

**Name** YIPF3

**Synonyms** C6orf109, KLIP1

**Function** Involved in the maintenance of the Golgi structure. May play a role in hematopoiesis.

#### **Cellular Location**

Cell membrane; Multi-pass membrane protein. Cytoplasm. Golgi apparatus, cis-Golgi network membrane; Multi-pass membrane protein Note=Localization to the cytoplasm or to the cell membrane is developmentally and ontogenetically regulated

#### **Tissue Location**

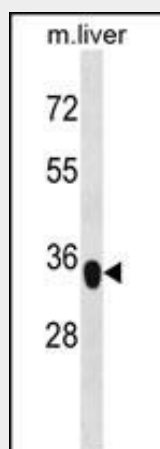
Expressed by nucleated hematopoietic cells (at protein level).

### **YIPF3 Antibody (C-term) - Protocols**

Provided below are standard protocols that you may find useful for product applications.

- [Western Blot](#)
- [Blocking Peptides](#)
- [Dot Blot](#)
- [Immunohistochemistry](#)
- [Immunofluorescence](#)
- [Immunoprecipitation](#)
- [Flow Cytometry](#)
- [Cell Culture](#)

### **YIPF3 Antibody (C-term) - Images**



YIPF3 Antibody (C-term) (Cat. #AP16954b) western blot analysis in mouse liver tissue lysates (35ug/lane). This demonstrates the YIPF3 antibody detected the YIPF3 protein (arrow).

### **YIPF3 Antibody (C-term) - Background**

YIPF3 may play a role in hematopoiesis.

### **YIPF3 Antibody (C-term) - References**

Strausberg, R.L., et al. Proc. Natl. Acad. Sci. U.S.A. 99(26):16899-16903(2002)