

DEXI Antibody (C-term)
Affinity Purified Rabbit Polyclonal Antibody (Pab)
Catalog # AP16938b**Specification**

DEXI Antibody (C-term) - Product Information

Application	WB,E
Primary Accession	O95424
Other Accession	O9WUQ7 , NP_054734.2
Reactivity	Human, Mouse
Host	Rabbit
Clonality	Polyclonal
Isotype	Rabbit IgG
Antigen Region	56-82

DEXI Antibody (C-term) - Additional Information**Gene ID** 28955**Other Names**

Dexamethasone-induced protein, Protein MYLE, DEXI, MYLE

Target/Specificity

This DEXI antibody is generated from rabbits immunized with a KLH conjugated synthetic peptide between 56-82 amino acids from the C-terminal region of human DEXI.

Dilution

WB~~1:1000

Format

Purified polyclonal antibody supplied in PBS with 0.09% (W/V) sodium azide. This antibody is purified through a protein A column, followed by peptide affinity purification.

Storage

Maintain refrigerated at 2-8°C for up to 2 weeks. For long term storage store at -20°C in small aliquots to prevent freeze-thaw cycles.

Precautions

DEXI Antibody (C-term) is for research use only and not for use in diagnostic or therapeutic procedures.

DEXI Antibody (C-term) - Protein Information**Name** DEXI**Synonyms** MYLE**Tissue Location**

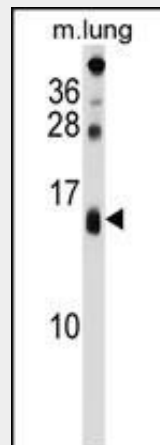
Highest levels in heart. Also expressed in brain, liver, pancreas, placenta and lung. Up-regulated in emphysematous lung compared to normal lung.

DEXI Antibody (C-term) - Protocols

Provided below are standard protocols that you may find useful for product applications.

- [Western Blot](#)
- [Blocking Peptides](#)
- [Dot Blot](#)
- [Immunohistochemistry](#)
- [Immunofluorescence](#)
- [Immunoprecipitation](#)
- [Flow Cytometry](#)
- [Cell Culture](#)

DEXI Antibody (C-term) - Images



DEXI Antibody (C-term) (Cat. #AP16938b) western blot analysis in mouse lung tissue lysates (35ug/lane). This demonstrates the DEXI antibody detected the DEXI protein (arrow).

DEXI Antibody (C-term) - Background

DEXI (dexamethasone-induced protein), also known as MYLE, is a 95 amino acid protein belonging to the DEXI family.

DEXI Antibody (C-term) - References

Edgar, A.J., et al. *Am. J. Respir. Cell Mol. Biol.* 25(1):119-124(2001)
Kelly, M., et al. *Cytogenet. Cell Genet.* 92 (1-2), 149-152 (2001) :
Christian, S.L., et al. *Hum. Mol. Genet.* 8(6):1025-1037(1999)