

SEPT1 Antibody (N-term)
Affinity Purified Rabbit Polyclonal Antibody (Pab)
Catalog # AP16865a

Specification

SEPT1 Antibody (N-term) - Product Information

Application	WB,E
Primary Accession	O8WYJ6
Other Accession	NP_443070.1
Reactivity	Human
Host	Rabbit
Clonality	Polyclonal
Isotype	Rabbit IgG
Calculated MW	42386
Antigen Region	54-82

SEPT1 Antibody (N-term) - Additional Information

Gene ID 1731

Other Names

Septin-1, LARP, Peanut-like protein 3, Serologically defined breast cancer antigen NY-BR-24, SEPT1, DIFF6, PNUTL3

Target/Specificity

This SEPT1 antibody is generated from rabbits immunized with a KLH conjugated synthetic peptide between 54-82 amino acids from the N-terminal region of human SEPT1.

Dilution

WB~~1:1000

Format

Purified polyclonal antibody supplied in PBS with 0.09% (W/V) sodium azide. This antibody is purified through a protein A column, followed by peptide affinity purification.

Storage

Maintain refrigerated at 2-8°C for up to 2 weeks. For long term storage store at -20°C in small aliquots to prevent freeze-thaw cycles.

Precautions

SEPT1 Antibody (N-term) is for research use only and not for use in diagnostic or therapeutic procedures.

SEPT1 Antibody (N-term) - Protein Information

Name SEPTIN1 ([HGNC:2879](#))

Synonyms DIFF6, PNUTL3, SEPT1

Function Filament-forming cytoskeletal GTPase (By similarity). May play a role in cytokinesis (Potential).

Cellular Location

Cytoplasm. Cytoplasm, cytoskeleton. Cytoplasm, cytoskeleton, microtubule organizing center, centrosome. Midbody. Note=Remains at the centrosomes and the nearby microtubules throughout mitosis. Localizes to the midbody during cytokinesis

Tissue Location

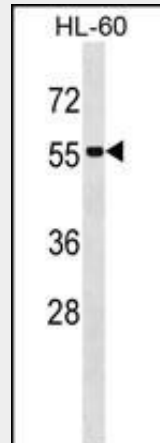
Expressed at high levels in lymphoid and hematopoietic tissues.

SEPT1 Antibody (N-term) - Protocols

Provided below are standard protocols that you may find useful for product applications.

- [Western Blot](#)
- [Blocking Peptides](#)
- [Dot Blot](#)
- [Immunohistochemistry](#)
- [Immunofluorescence](#)
- [Immunoprecipitation](#)
- [Flow Cytometry](#)
- [Cell Culture](#)

SEPT1 Antibody (N-term) - Images



SEPT1 Antibody (N-term) (Cat. #AP16865a) western blot analysis in HL-60 cell line lysates (35ug/lane). This demonstrates the SEPT1 antibody detected the SEPT1 protein (arrow).

SEPT1 Antibody (N-term) - Background

This gene is a member of the septin family of GTPases. Members of this family are required for cytokinesis. This gene encodes a protein associated with the tau-based paired helical filament core, and may contribute to the formation of neurofibrillary tangles in Alzheimer's disease. [provided by RefSeq].

SEPT1 Antibody (N-term) - References

Kato, Y., et al. *Int. J. Oncol.* 31(5):1021-1028(2007)
Steels, J.D., et al. *Cell Motil. Cytoskeleton* 64(10):794-807(2007)
Qi, M., et al. *Biochem. Biophys. Res. Commun.* 336(3):994-1000(2005)
Qi, M., et al. *Biochem. Biophys. Res. Commun.* 336(3):994-1000(2005)
Scanlan, M.J., et al. *Cancer Immun.* 1, 4 (2001) :