

TUBGCP3 Antibody (C-term)
Affinity Purified Rabbit Polyclonal Antibody (Pab)
Catalog # AP16845b

Specification

TUBGCP3 Antibody (C-term) - Product Information

Application	WB,E
Primary Accession	O96CW5
Other Accession	P58854 , NP_006313.1
Reactivity	Human
Predicted	Mouse
Host	Rabbit
Clonality	Polyclonal
Isotype	Rabbit IgG
Calculated MW	103571
Antigen Region	787-816

TUBGCP3 Antibody (C-term) - Additional Information

Gene ID 10426

Other Names

Gamma-tubulin complex component 3, GCP-3, hGCP3, Gamma-ring complex protein 104 kDa, h104p, hGrip104, Spindle pole body protein Spc98 homolog, hSpc98, TUBGCP3, GCP3

Target/Specificity

This TUBGCP3 antibody is generated from rabbits immunized with a KLH conjugated synthetic peptide between 787-816 amino acids from the C-terminal region of human TUBGCP3.

Dilution

WB~~1:1000

Format

Purified polyclonal antibody supplied in PBS with 0.09% (W/V) sodium azide. This antibody is purified through a protein A column, followed by peptide affinity purification.

Storage

Maintain refrigerated at 2-8°C for up to 2 weeks. For long term storage store at -20°C in small aliquots to prevent freeze-thaw cycles.

Precautions

TUBGCP3 Antibody (C-term) is for research use only and not for use in diagnostic or therapeutic procedures.

TUBGCP3 Antibody (C-term) - Protein Information

Name TUBGCP3

Synonyms GCP3

Function Gamma-tubulin complex is necessary for microtubule nucleation at the centrosome.

Cellular Location

Cytoplasm, cytoskeleton, microtubule organizing center, centrosome

Tissue Location

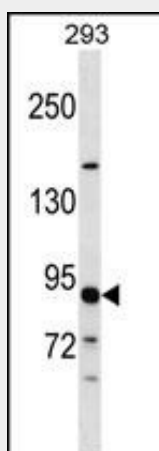
Ubiquitously expressed.

TUBGCP3 Antibody (C-term) - Protocols

Provided below are standard protocols that you may find useful for product applications.

- [Western Blot](#)
- [Blocking Peptides](#)
- [Dot Blot](#)
- [Immunohistochemistry](#)
- [Immunofluorescence](#)
- [Immunoprecipitation](#)
- [Flow Cytometry](#)
- [Cell Culture](#)

TUBGCP3 Antibody (C-term) - Images



TUBGCP3 Antibody (C-term) (Cat. #AP16845b) western blot analysis in 293 cell line lysates (35ug/lane). This demonstrates the TUBGCP3 antibody detected the TUBGCP3 protein (arrow).

TUBGCP3 Antibody (C-term) - Background

Gamma-tubulin complex is necessary for microtubule nucleation at the centrosome.

TUBGCP3 Antibody (C-term) - References

- Rose, J.E., et al. Mol. Med. 16 (7-8), 247-253 (2010) :
Fant, X., et al. J. Cell. Sci. 122 (PT 8), 1134-1144 (2009) :
Dunham, A., et al. Nature 428(6982):522-528(2004)
Takahashi, M., et al. Mol. Biol. Cell 13(9):3235-3245(2002)
Haren, L., et al. J. Cell. Sci. 115 (PT 9), 1815-1824 (2002) :