

DSC3 Antibody (C-term)
Affinity Purified Rabbit Polyclonal Antibody (Pab)
Catalog # AP16771b

Specification

DSC3 Antibody (C-term) - Product Information

| | |
|-------------------|---|
| Application | WB,E |
| Primary Accession | Q14574 |
| Other Accession | NP_077741.2 , NP_001932.2 |
| Reactivity | Human |
| Host | Rabbit |
| Clonality | Polyclonal |
| Isotype | Rabbit IgG |
| Calculated MW | 99969 |
| Antigen Region | 822-850 |

DSC3 Antibody (C-term) - Additional Information

Gene ID 1825

Other Names

Desmocollin-3, Cadherin family member 3, Desmocollin-4, HT-CP, DSC3, CDHF3, DSC4

Target/Specificity

This DSC3 antibody is generated from rabbits immunized with a KLH conjugated synthetic peptide between 822-850 amino acids from the C-terminal region of human DSC3.

Dilution

WB~~1:1000

Format

Purified polyclonal antibody supplied in PBS with 0.09% (W/V) sodium azide. This antibody is purified through a protein A column, followed by peptide affinity purification.

Storage

Maintain refrigerated at 2-8°C for up to 2 weeks. For long term storage store at -20°C in small aliquots to prevent freeze-thaw cycles.

Precautions

DSC3 Antibody (C-term) is for research use only and not for use in diagnostic or therapeutic procedures.

DSC3 Antibody (C-term) - Protein Information

Name DSC3

Synonyms CDHF3, DSC4

Function Component of intercellular desmosome junctions. Involved in the interaction of plaque proteins and intermediate filaments mediating cell-cell adhesion. May contribute to epidermal cell positioning (stratification) by mediating differential adhesiveness between cells that express different isoforms.

Cellular Location

Cell membrane; Single-pass type I membrane protein. Cell junction, desmosome

Tissue Location

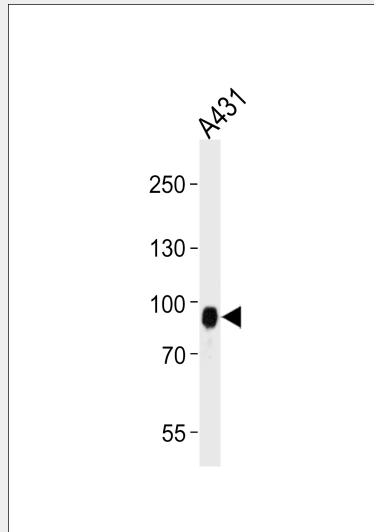
Epidermis, buccal mucosa, esophagus and cervix.

DSC3 Antibody (C-term) - Protocols

Provided below are standard protocols that you may find useful for product applications.

- [Western Blot](#)
- [Blocking Peptides](#)
- [Dot Blot](#)
- [Immunohistochemistry](#)
- [Immunofluorescence](#)
- [Immunoprecipitation](#)
- [Flow Cytometry](#)
- [Cell Culture](#)

DSC3 Antibody (C-term) - Images



Western blot analysis of lysate from A431 cell line, using DSC3 Antibody (C-term)(Cat. #AP16771b). AP16771b was diluted at 1:1000 at each lane. A goat anti-rabbit IgG H&L(HRP) at 1:5000 dilution was used as the secondary antibody. Lysate at 35ug per lane.

DSC3 Antibody (C-term) - Background

The protein encoded by this gene is a calcium-dependent glycoprotein that is a member of the desmocollin subfamily of the cadherin superfamily. These desmosomal family members, along with the desmogleins, are found primarily in epithelial cells where they constitute the adhesive proteins of the desmosome cell-cell

junction and are required for cell adhesion and desmosome formation. The desmosomal family members are arranged in two clusters on chromosome 18, occupying less than 650 kb combined. Alternative splicing results in two transcript variants encoding distinct isoforms.

DSC3 Antibody (C-term) - References

Rose, J.E., et al. Mol. Med. 16 (7-8), 247-253 (2010) :
Johnatty, S.E., et al. PLoS Genet. 6 (7), E1001016 (2010) :
Spindler, V., et al. J. Biol. Chem. 284(44):30556-30564(2009)
Ayub, M., et al. Am. J. Hum. Genet. 85(4):515-520(2009)
Aoyama, Y., et al. Exp. Dermatol. 18(4):404-408(2009)