

**GREB1 Antibody (Center)**  
**Affinity Purified Rabbit Polyclonal Antibody (Pab)**  
**Catalog # AP16749c**

**Specification**

---

**GREB1 Antibody (Center) - Product Information**

Application	WB,E
Primary Accession	<a href="#">Q4ZG55</a>
Other Accession	<a href="#">Q3UHK3</a> , <a href="#">NP_055483.2</a> , <a href="#">NP_149081.1</a>
Reactivity	Human, Mouse
Host	Rabbit
Clonality	Polyclonal
Isotype	Rabbit IgG
Calculated MW	216467
Antigen Region	1417-1446

**GREB1 Antibody (Center) - Additional Information**

**Gene ID** 9687

**Other Names**

Protein GREB1, Gene regulated in breast cancer 1 protein, GREB1, KIAA0575

**Target/Specificity**

This GREB1 antibody is generated from rabbits immunized with a KLH conjugated synthetic peptide between 1417-1446 amino acids from the Central region of human GREB1.

**Dilution**

WB~~1:1000

**Format**

Purified polyclonal antibody supplied in PBS with 0.09% (W/V) sodium azide. This antibody is purified through a protein A column, followed by peptide affinity purification.

**Storage**

Maintain refrigerated at 2-8°C for up to 2 weeks. For long term storage store at -20°C in small aliquots to prevent freeze-thaw cycles.

**Precautions**

GREB1 Antibody (Center) is for research use only and not for use in diagnostic or therapeutic procedures.

**GREB1 Antibody (Center) - Protein Information**

**Name** GREB1

**Synonyms** KIAA0575

**Function** May play a role in estrogen-stimulated cell proliferation. Acts as a regulator of hormone-dependent cancer growth in breast and prostate cancers.

**Cellular Location**

Membrane; Single-pass membrane protein

**Tissue Location**

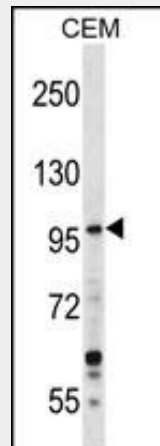
Expressed in proliferating prostatic tissue and prostate cancer.

**GREB1 Antibody (Center) - Protocols**

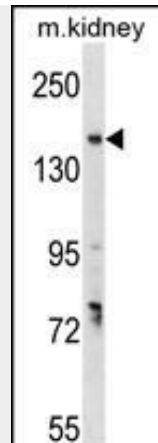
Provided below are standard protocols that you may find useful for product applications.

- [Western Blot](#)
- [Blocking Peptides](#)
- [Dot Blot](#)
- [Immunohistochemistry](#)
- [Immunofluorescence](#)
- [Immunoprecipitation](#)
- [Flow Cytometry](#)
- [Cell Culture](#)

**GREB1 Antibody (Center) - Images**



GREB1 Antibody (Cat. #AP16749c) western blot analysis in CEM cell line lysates (35ug/lane). This demonstrates the GREB1 antibody detected the GREB1 protein (arrow).



GREB1 Antibody (Cat. #AP16749c) western blot analysis in mouse kidney tissue lysates (35ug/lane). This demonstrates the GREB1 antibody detected the GREB1 protein (arrow).

### **GREB1 Antibody (Center) - Background**

This gene is an estrogen-responsive gene that is an early response gene in the estrogen receptor-regulated pathway. It is thought to play an important role in hormone-responsive tissues and cancer. Three alternatively spliced transcript variants encoding distinct isoforms have been found for this gene. [provided by RefSeq].

### **GREB1 Antibody (Center) - References**

Hnatyszyn, H.J., et al. *Breast Cancer Res. Treat.* 122(2):371-380(2010)  
Trynka, G., et al. *Gut* 58(8):1078-1083(2009)  
Rittie, L., et al. *Arch Dermatol* 144(9):1129-1140(2008)  
Sun, J., et al. *Mol. Endocrinol.* 21(11):2651-2662(2007)  
Deschenes, J., et al. *J. Biol. Chem.* 282(24):17335-17339(2007)