

**CTDSP1 Antibody (N-term)**  
**Affinity Purified Rabbit Polyclonal Antibody (Pab)**  
**Catalog # AP16726a****Specification**

---

**CTDSP1 Antibody (N-term) - Product Information**

Application	WB,E
Primary Accession	<a href="#">O9GZU7</a>
Other Accession	<a href="#">P58466</a> , <a href="#">NP_872580.1</a> , <a href="#">NP_067021.1</a>
Reactivity	Human
Predicted	Mouse
Host	Rabbit
Clonality	Polyclonal
Isotype	Rabbit IgG
Calculated MW	29203
Antigen Region	1-30

**CTDSP1 Antibody (N-term) - Additional Information****Gene ID** 58190**Other Names**

Carboxy-terminal domain RNA polymerase II polypeptide A small phosphatase 1, Nuclear LIM interactor-interacting factor 3, NLI-IF, NLI-interacting factor 3, Small C-terminal domain phosphatase 1, SCP1, Small CTD phosphatase 1, CTDSP1, NIF3, NLIIF, SCP1

**Target/Specificity**

This CTDSP1 antibody is generated from rabbits immunized with a KLH conjugated synthetic peptide between 1-30 amino acids from the N-terminal region of human CTDSP1.

**Dilution**

WB~~1:1000

**Format**

Purified polyclonal antibody supplied in PBS with 0.09% (W/V) sodium azide. This antibody is purified through a protein A column, followed by peptide affinity purification.

**Storage**

Maintain refrigerated at 2-8°C for up to 2 weeks. For long term storage store at -20°C in small aliquots to prevent freeze-thaw cycles.

**Precautions**

CTDSP1 Antibody (N-term) is for research use only and not for use in diagnostic or therapeutic procedures.

**CTDSP1 Antibody (N-term) - Protein Information****Name** CTDSP1

**Synonyms** NIF3, NLIIF, SCP1

**Function** Preferentially catalyzes the dephosphorylation of 'Ser-5' within the tandem 7 residue repeats in the C-terminal domain (CTD) of the largest RNA polymerase II subunit POLR2A. Negatively regulates RNA polymerase II transcription, possibly by controlling the transition from initiation/capping to processive transcript elongation. Recruited by REST to neuronal genes that contain RE-1 elements, leading to neuronal gene silencing in non-neuronal cells.

**Cellular Location**

Nucleus. Note=Colocalizes with RNA polymerase II

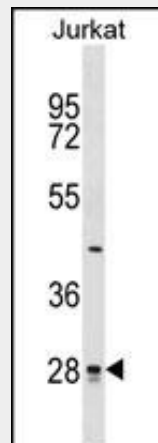
**Tissue Location**

Expression is restricted to non-neuronal tissues. Highest expression in skeletal muscle, spleen, lung and placenta

**CTDSP1 Antibody (N-term) - Protocols**

Provided below are standard protocols that you may find useful for product applications.

- [Western Blot](#)
- [Blocking Peptides](#)
- [Dot Blot](#)
- [Immunohistochemistry](#)
- [Immunofluorescence](#)
- [Immunoprecipitation](#)
- [Flow Cytometry](#)
- [Cell Culture](#)

**CTDSP1 Antibody (N-term) - Images**

CTDSP1 Antibody (N-term) (Cat. #AP16726a) western blot analysis in Jurkat cell line lysates (35ug/lane). This demonstrates the CTDSP1 antibody detected the CTDSP1 protein (arrow).

**CTDSP1 Antibody (N-term) - Background**

Preferentially catalyzes the dephosphorylation of 'Ser-5' within the tandem 7 residues repeats in the C-terminal domain (CTD) of the largest RNA polymerase II subunit POLR2A. Negatively regulates RNA polymerase II transcription, possibly by controlling the transition from initiation/capping to processive transcript elongation. Recruited by REST to neuronal genes that contain RE-1 elements, leading to neuronal gene silencing in non-neuronal cells.

**CTDSP1 Antibody (N-term) - References**

- Bailey, S.D., et al. Diabetes Care 33(10):2250-2253(2010)  
Zhang, M., et al. Protein Sci. 19(5):974-986(2010)  
Ji, H., et al. Plant J. 61(1):96-106(2010)  
Talmud, P.J., et al. Am. J. Hum. Genet. 85(5):628-642(2009)  
Sapkota, G., et al. J. Biol. Chem. 281(52):40412-40419(2006)