

**CREB3L4 Antibody (C-term)**  
**Affinity Purified Rabbit Polyclonal Antibody (Pab)**  
**Catalog # AP16716b**

**Specification**

---

**CREB3L4 Antibody (C-term) - Product Information**

Application	WB,E
Primary Accession	<a href="#">Q8TEY5</a>
Other Accession	<a href="#">NP_570968.1</a>
Reactivity	Human
Host	Rabbit
Clonality	Polyclonal
Isotype	Rabbit IgG
Calculated MW	43432
Antigen Region	338-366

**CREB3L4 Antibody (C-term) - Additional Information**

**Gene ID** 148327

**Other Names**

Cyclic AMP-responsive element-binding protein 3-like protein 4, cAMP-responsive element-binding protein 3-like protein 4, Androgen-induced basic leucine zipper protein, AlbZIP, Attaching to CRE-like 1, ATCE1, Cyclic AMP-responsive element-binding protein 4, CREB-4, cAMP-responsive element-binding protein 4, Transcript induced in spermiogenesis protein 40, Tisp40, hJAL, Processed cyclic AMP-responsive element-binding protein 3-like protein 4, CREB3L4, AIBZIP, CREB4, JAL

**Target/Specificity**

This CREB3L4 antibody is generated from rabbits immunized with a KLH conjugated synthetic peptide between 338-366 amino acids from the C-terminal region of human CREB3L4.

**Dilution**

WB~~1:1000

**Format**

Purified polyclonal antibody supplied in PBS with 0.09% (W/V) sodium azide. This antibody is purified through a protein A column, followed by peptide affinity purification.

**Storage**

Maintain refrigerated at 2-8°C for up to 2 weeks. For long term storage store at -20°C in small aliquots to prevent freeze-thaw cycles.

**Precautions**

CREB3L4 Antibody (C-term) is for research use only and not for use in diagnostic or therapeutic procedures.

**CREB3L4 Antibody (C-term) - Protein Information**

**Name** CREB3L4

**Synonyms** AIBZIP, CREB4, JAL

**Function** Transcriptional activator that may play a role in the unfolded protein response. Binds to the UPR element (UPRE) but not to CRE element. Preferentially binds DNA with to the consensus sequence 5'-T[GT]ACGT[GA][GT]-3' and has transcriptional activation activity from UPRE. Binds to NF-kappa-B site and has transcriptional activation activity from NF-kappa-B-containing regulatory elements (By similarity).

**Cellular Location**

Endoplasmic reticulum membrane; Single-pass type II membrane protein. Golgi apparatus membrane; Single- pass type II membrane protein. Note=May also be located in Golgi apparatus

**Tissue Location**

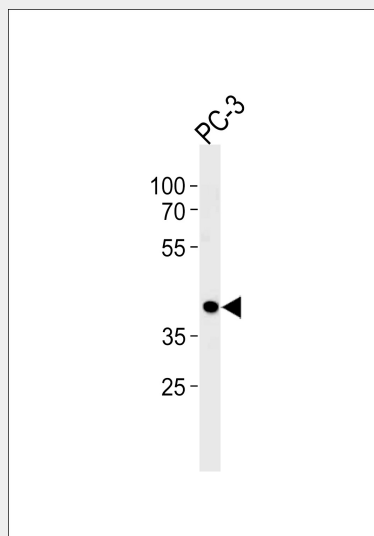
According to PubMed:11830526, exclusively expressed in the prostate. Expressed in breast and prostate cancer cell lines Expressed in prostatic luminal epithelial cells (at protein level) Expression is significantly more abundant in prostate cancer than in benign prostatic tissue (prostatic hyperplasia). According to PubMed:12111373, also expressed in brain, pancreas and skeletal muscle, and at lower levels in small intestine, testis, leukocyte and thymus

**CREB3L4 Antibody (C-term) - Protocols**

Provided below are standard protocols that you may find useful for product applications.

- [Western Blot](#)
- [Blocking Peptides](#)
- [Dot Blot](#)
- [Immunohistochemistry](#)
- [Immunofluorescence](#)
- [Immunoprecipitation](#)
- [Flow Cytometry](#)
- [Cell Culture](#)

**CREB3L4 Antibody (C-term) - Images**



CREB3L4 Antibody (C-term) (Cat. #AP16716b) western blot analysis in PC-3 cell line lysates

(35ug/lane). This demonstrates the CREB3L4 antibody detected the CREB3L4 protein (arrow).

### **CREB3L4 Antibody (C-term) - Background**

cAMP response element-binding (CREB) proteins are a family of mammalian transcription activators. For further background information on CREB proteins, see CREB1 (MIM 123810). [supplied by OMIM].

### **CREB3L4 Antibody (C-term) - References**

Ben Aicha, S., et al. *Physiol. Genomics* 31(2):295-305(2007)  
Stirling, J., et al. *Mol. Biol. Cell* 17(1):413-426(2006)  
Stelzer, G., et al. *Endocrinology* 143(5):1578-1588(2002)  
Qi, H., et al. *Cancer Res.* 62(3):721-733(2002)  
Cao, G., et al. *J. Hum. Genet.* 47(7):373-376(2002)