

**TGFBI Antibody (N-term)**  
**Affinity Purified Rabbit Polyclonal Antibody (Pab)**  
**Catalog # AP16708a**

**Specification**

---

**TGFBI Antibody (N-term) - Product Information**

Application	WB, FC,E
Primary Accession	<a href="#">Q15582</a>
Other Accession	<a href="#">Q95215</a> , <a href="#">O11780</a> , <a href="#">P82198</a> , <a href="#">NP_000349.1</a> , <a href="#">P55906</a>
Reactivity	Human
Predicted	Bovine, Mouse, Pig, Rabbit
Host	Rabbit
Clonality	Polyclonal
Isotype	Rabbit IgG
Calculated MW	74681
Antigen Region	106-135

**TGFBI Antibody (N-term) - Additional Information**

**Gene ID** 7045

**Other Names**

Transforming growth factor-beta-induced protein ig-h3, Beta ig-h3, Kerato-epithelin, RGD-containing collagen-associated protein, RGD-CAP, TGFBI, BIGH3

**Target/Specificity**

This TGFBI antibody is generated from rabbits immunized with a KLH conjugated synthetic peptide between 106-135 amino acids from the N-terminal region of human TGFBI.

**Dilution**

WB~~1:1000  
FC~~1:10~50

**Format**

Purified polyclonal antibody supplied in PBS with 0.09% (W/V) sodium azide. This antibody is purified through a protein A column, followed by peptide affinity purification.

**Storage**

Maintain refrigerated at 2-8°C for up to 2 weeks. For long term storage store at -20°C in small aliquots to prevent freeze-thaw cycles.

**Precautions**

TGFBI Antibody (N-term) is for research use only and not for use in diagnostic or therapeutic procedures.

**TGFBI Antibody (N-term) - Protein Information**

**Name** TGFBI

**Synonyms** BIGH3

**Function** Plays a role in cell adhesion (PubMed:[8024701](#)). May play a role in cell-collagen interactions (By similarity).

**Cellular Location**

Secreted. Secreted, extracellular space, extracellular matrix Note=May be associated both with microfibrils and with the cell surface (PubMed:8077289).

**Tissue Location**

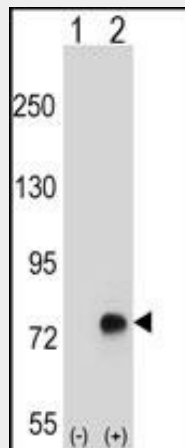
Highly expressed in the corneal epithelium (PubMed:27609313, PubMed:8077289). Expressed in heart, placenta, lung, liver, skeletal muscle, kidney and pancreas (PubMed:8077289)

**TGFBI Antibody (N-term) - Protocols**

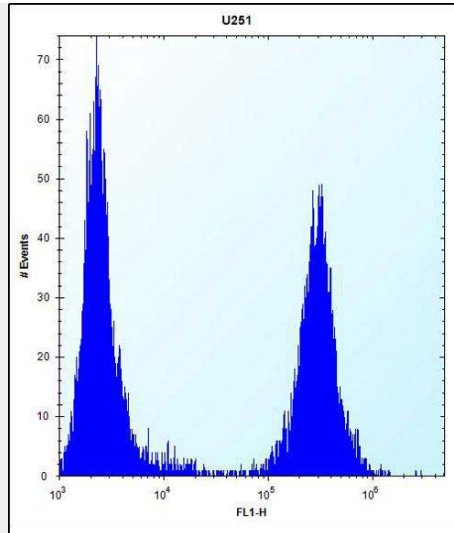
Provided below are standard protocols that you may find useful for product applications.

- [Western Blot](#)
- [Blocking Peptides](#)
- [Dot Blot](#)
- [Immunohistochemistry](#)
- [Immunofluorescence](#)
- [Immunoprecipitation](#)
- [Flow Cytometry](#)
- [Cell Culture](#)

**TGFBI Antibody (N-term) - Images**



Western blot analysis of TGFBI (arrow) using rabbit polyclonal TGFBI Antibody (N-term) (Cat. #AP16708a). 293 cell lysates (2 ug/lane) either nontransfected (Lane 1) or transiently transfected (Lane 2) with the TGFBI gene.



TGFBI Antibody (N-term) (Cat. #AP16708a) flow cytometric analysis of U251 cells (right histogram) compared to a negative control cell (left histogram). FITC-conjugated goat-anti-rabbit secondary antibodies were used for the analysis.

#### **TGFBI Antibody (N-term) - Background**

This gene encodes an RGD-containing protein that binds to type I, II and IV collagens. The RGD motif is found in many extracellular matrix proteins modulating cell adhesion and serves as a ligand recognition sequence for several integrins. This protein plays a role in cell-collagen interactions and may be involved in endochondrial bone formation in cartilage. The protein is induced by transforming growth factor-beta and acts to inhibit cell adhesion. Mutations in this gene are associated with multiple types of corneal dystrophy.

#### **TGFBI Antibody (N-term) - References**

Bailey, S.D., et al. Diabetes Care 33(10):2250-2253(2010)  
Edelstein, S.L., et al. Cornea 29(6):698-700(2010)  
Romero, P., et al. Mol. Vis. 16, 1601-1609 (2010) :  
Paliwal, P., et al. Mol. Vis. 16, 1429-1438 (2010) :  
Yang, J., et al. Mol. Vis. 16, 1186-1193 (2010) :