

**CDCA4 Antibody (C-term)**  
**Affinity Purified Rabbit Polyclonal Antibody (Pab)**  
**Catalog # AP16652b**

**Specification**

---

**CDCA4 Antibody (C-term) - Product Information**

Application	WB,E
Primary Accession	<a href="#">O9BXL8</a>
Other Accession	<a href="#">NP_060425.2</a> , <a href="#">NP_663747.1</a>
Reactivity	Human
Host	Rabbit
Clonality	Polyclonal
Isotype	Rabbit IgG
Calculated MW	26114
Antigen Region	163-190

**CDCA4 Antibody (C-term) - Additional Information**

**Gene ID** 55038

**Other Names**

Cell division cycle-associated protein 4, Hematopoietic progenitor protein, CDCA4, HEPP

**Target/Specificity**

This CDCA4 antibody is generated from rabbits immunized with a KLH conjugated synthetic peptide between 163-190 amino acids from the C-terminal region of human CDCA4.

**Dilution**

WB~~1:1000

**Format**

Purified polyclonal antibody supplied in PBS with 0.09% (W/V) sodium azide. This antibody is purified through a protein A column, followed by peptide affinity purification.

**Storage**

Maintain refrigerated at 2-8°C for up to 2 weeks. For long term storage store at -20°C in small aliquots to prevent freeze-thaw cycles.

**Precautions**

CDCA4 Antibody (C-term) is for research use only and not for use in diagnostic or therapeutic procedures.

**CDCA4 Antibody (C-term) - Protein Information**

**Name** CDCA4

**Synonyms** HEPP

**Function** May participate in the regulation of cell proliferation through the E2F/RB pathway. May be involved in molecular regulation of hematopoietic stem cells and progenitor cell lineage commitment and differentiation (By similarity).

#### **Cellular Location**

Nucleus.

#### **Tissue Location**

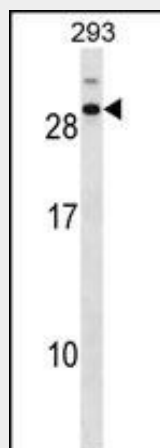
Highest levels of expression in the pancreas, thymus, testis, spleen, liver, placenta and leukocytes. Relatively low levels in the lung, kidney, prostate, ovary, small intestine and colon. Hardly detectable, if at all, in the brain, skeletal muscle and heart.

### **CDCA4 Antibody (C-term) - Protocols**

Provided below are standard protocols that you may find useful for product applications.

- [Western Blot](#)
- [Blocking Peptides](#)
- [Dot Blot](#)
- [Immunohistochemistry](#)
- [Immunofluorescence](#)
- [Immunoprecipitation](#)
- [Flow Cytometry](#)
- [Cell Culture](#)

### **CDCA4 Antibody (C-term) - Images**



CDCA4 Antibody (C-term) (Cat. #AP16652b) western blot analysis in 293 cell line lysates (35ug/lane). This demonstrates the CDCA4 antibody detected the CDCA4 protein (arrow).

### **CDCA4 Antibody (C-term) - Background**

This gene encodes a protein that belongs to the E2F family of transcription factors. This protein regulates E2F-dependent transcriptional activation and cell proliferation, mainly through the E2F/retinoblastoma protein pathway. It also functions in the regulation of JUN oncogene expression. This protein shows distinctive nuclear-mitotic apparatus distribution, it is involved in spindle organization from prometaphase, and may also play a role as a midzone factor involved in chromosome segregation or

cytokinesis. Two alternatively spliced transcript variants encoding the same protein have been noted for this gene. Two pseudogenes have also been identified on chromosome 1.

#### **CDCA4 Antibody (C-term) - References**

- Tategu, M., et al. Biochimie 90(10):1515-1522(2008)  
Wang, L., et al. Cell Motil. Cytoskeleton 65(7):581-593(2008)  
Hayashi, R., et al. J. Biol. Chem. 281(47):35633-35648(2006)  
Walker, M.G. Curr Cancer Drug Targets 1(1):73-83(2001)  
Abdullah, J.M., et al. Blood Cells Mol. Dis. 27(3):667-676(2001)