

**RHOF Antibody (C-term)**  
**Affinity Purified Rabbit Polyclonal Antibody (Pab)**  
**Catalog # AP16619b**

**Specification**

---

**RHOF Antibody (C-term) - Product Information**

|                   |                             |
|-------------------|-----------------------------|
| Application       | WB,E                        |
| Primary Accession | <a href="#">O9HBH0</a>      |
| Other Accession   | <a href="#">NP_061907.2</a> |
| Reactivity        | Human                       |
| Host              | Rabbit                      |
| Clonality         | Polyclonal                  |
| Isotype           | Rabbit IgG                  |
| Calculated MW     | 23625                       |
| Antigen Region    | 178-206                     |

**RHOF Antibody (C-term) - Additional Information**

**Gene ID** 54509

**Other Names**

Rho-related GTP-binding protein RhoF, Rho family GTPase Rif, Rho in filopodia, RHOF, ARHF, RIF

**Target/Specificity**

This RHOF antibody is generated from rabbits immunized with a KLH conjugated synthetic peptide between 178-206 amino acids from the C-terminal region of human RHOF.

**Dilution**

WB~~1:1000

**Format**

Purified polyclonal antibody supplied in PBS with 0.09% (W/V) sodium azide. This antibody is purified through a protein A column, followed by peptide affinity purification.

**Storage**

Maintain refrigerated at 2-8°C for up to 2 weeks. For long term storage store at -20°C in small aliquots to prevent freeze-thaw cycles.

**Precautions**

RHOF Antibody (C-term) is for research use only and not for use in diagnostic or therapeutic procedures.

**RHOF Antibody (C-term) - Protein Information**

**Name** RHOF

**Synonyms** ARHF, RIF

**Function** Plasma membrane-associated small GTPase which cycles between an active GTP-bound and an inactive GDP-bound state. Causes the formation of thin, actin-rich surface projections called filopodia. Functions cooperatively with CDC42 and Rac to generate additional structures, increasing the diversity of actin-based morphology.

#### **Cellular Location**

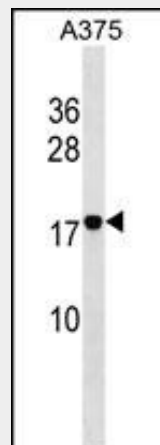
Cell membrane; Lipid-anchor; Cytoplasmic side. Cytoplasm, cytoskeleton

#### **RHOF Antibody (C-term) - Protocols**

Provided below are standard protocols that you may find useful for product applications.

- [Western Blot](#)
- [Blocking Peptides](#)
- [Dot Blot](#)
- [Immunohistochemistry](#)
- [Immunofluorescence](#)
- [Immunoprecipitation](#)
- [Flow Cytometry](#)
- [Cell Culture](#)

#### **RHOF Antibody (C-term) - Images**



RHOF Antibody (C-term) (Cat. #AP16619b) western blot analysis in A375 cell line lysates (35ug/lane). This demonstrates the RHOF antibody detected the RHOF protein (arrow).

#### **RHOF Antibody (C-term) - Background**

Plasma membrane-associated small GTPase which cycles between an active GTP-bound and an inactive GDP-bound state. Causes the formation of thin, actin-rich surface projections called filopodia. Functions cooperatively with CDC42 and Rac to generate additional structures, increasing the diversity of actin-based morphology.

#### **RHOF Antibody (C-term) - References**

- Fan, L., et al. J. Cell. Sci. 123 (PT 8), 1247-1252 (2010) :  
Carbone, A., et al. Genes Chromosomes Cancer 47(12):1067-1075(2008)  
Ellis, S., et al. Curr. Biol. 10(21):1387-1390(2000)