

**TAS2R31 Antibody (C-term)**  
**Affinity Purified Rabbit Polyclonal Antibody (Pab)**  
**Catalog # AP16600b**

**Specification**

---

**TAS2R31 Antibody (C-term) - Product Information**

Application	WB,E
Primary Accession	<a href="#">P59538</a>
Other Accession	<a href="#">NP_795366.2</a>
Reactivity	Human
Host	Rabbit
Clonality	Polyclonal
Isotype	Rabbit IgG
Calculated MW	35278
Antigen Region	280-309

**TAS2R31 Antibody (C-term) - Additional Information**

**Gene ID** 259290

**Other Names**

Taste receptor type 2 member 31, T2R31, Taste receptor type 2 member 44, T2R44, Taste receptor type 2 member 53, T2R53, TAS2R31, TAS2R44

**Target/Specificity**

This TAS2R31 antibody is generated from rabbits immunized with a KLH conjugated synthetic peptide between 280-309 amino acids from the C-terminal region of human TAS2R31.

**Dilution**

WB~~1:1000

**Format**

Purified polyclonal antibody supplied in PBS with 0.09% (W/V) sodium azide. This antibody is purified through a protein A column, followed by peptide affinity purification.

**Storage**

Maintain refrigerated at 2-8°C for up to 2 weeks. For long term storage store at -20°C in small aliquots to prevent freeze-thaw cycles.

**Precautions**

TAS2R31 Antibody (C-term) is for research use only and not for use in diagnostic or therapeutic procedures.

**TAS2R31 Antibody (C-term) - Protein Information**

**Name** TAS2R31

**Synonyms** TAS2R44

**Function** Receptor that may play a role in the perception of bitterness and is gustducin-linked. May play a role in sensing the chemical composition of the gastrointestinal content. The activity of this receptor may stimulate alpha gustducin, mediate PLC-beta-2 activation and lead to the gating of TRPM5 (By similarity). Activated by the sulfonyl amide sweeteners saccharin and acesulfame K.

**Cellular Location**

Membrane; Multi-pass membrane protein.

**Tissue Location**

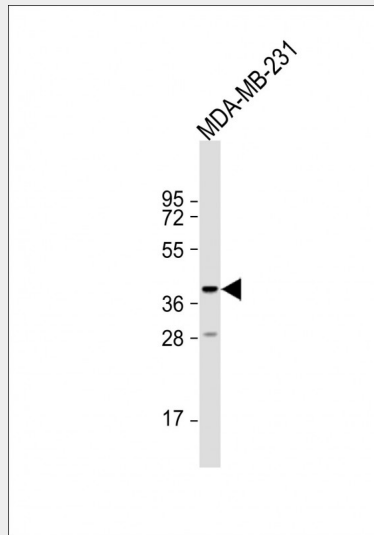
Expressed in subsets of taste receptor cells of the tongue and exclusively in gustducin-positive cells

**TAS2R31 Antibody (C-term) - Protocols**

Provided below are standard protocols that you may find useful for product applications.

- [Western Blot](#)
- [Blocking Peptides](#)
- [Dot Blot](#)
- [Immunohistochemistry](#)
- [Immunofluorescence](#)
- [Immunoprecipitation](#)
- [Flow Cytometry](#)
- [Cell Culture](#)

**TAS2R31 Antibody (C-term) - Images**



Anti-TAS2R31 Antibody (C-term) at 1:1000 dilution + MDA-MB-231 whole cell lysate Lysates/proteins at 20 µg per lane. Secondary Goat Anti-Rabbit IgG, (H+L), Peroxidase conjugated at 1/10000 dilution. Predicted band size : 35 kDa Blocking/Dilution buffer: 5% NFDM/TBST.

**TAS2R31 Antibody (C-term) - Background**

TAS2R44 belongs to the large TAS2R receptor family. TAS2Rs are expressed on the surface of taste receptor cells and mediate the perception of bitterness through a G protein-coupled second messenger pathway (Conte et al., 2002 [PubMed 12584440]). For

further information on TAS2Rs, see MIM 604791.

#### **TAS2R31 Antibody (C-term) - References**

Pronin, A.N., et al. *Curr. Biol.* 17(16):1403-1408(2007)  
Fischer, A., et al. *Mol. Biol. Evol.* 22(3):432-436(2005)  
Kuhn, C., et al. *J. Neurosci.* 24(45):10260-10265(2004)  
Pronin, A.N., et al. *Chem. Senses* 29(7):583-593(2004)  
Zhang, Y., et al. *Cell* 112(3):293-301(2003)