

SEL1L Antibody (N-term)
Affinity Purified Rabbit Polyclonal Antibody (Pab)
Catalog # AP16575a

Specification

SEL1L Antibody (N-term) - Product Information

Application	WB,E
Primary Accession	O9UBV2
Other Accession	NP_005056.3
Reactivity	Human
Host	Rabbit
Clonality	Polyclonal
Isotype	Rabbit IgG
Calculated MW	88755
Antigen Region	83-112

SEL1L Antibody (N-term) - Additional Information

Gene ID 6400

Other Names

Protein sel-1 homolog 1, Suppressor of lin-12-like protein 1, Sel-1L, SEL1L, TSA305

Target/Specificity

This SEL1L antibody is generated from rabbits immunized with a KLH conjugated synthetic peptide between 83-112 amino acids from the N-terminal region of human SEL1L.

Dilution

WB~~1:1000

Format

Purified polyclonal antibody supplied in PBS with 0.09% (W/V) sodium azide. This antibody is purified through a protein A column, followed by peptide affinity purification.

Storage

Maintain refrigerated at 2-8°C for up to 2 weeks. For long term storage store at -20°C in small aliquots to prevent freeze-thaw cycles.

Precautions

SEL1L Antibody (N-term) is for research use only and not for use in diagnostic or therapeutic procedures.

SEL1L Antibody (N-term) - Protein Information

Name SEL1L

Synonyms TSA305

Function Plays a role in the endoplasmic reticulum quality control (ERQC) system also called ER-associated degradation (ERAD) involved in ubiquitin-dependent degradation of misfolded endoplasmic reticulum proteins (PubMed:[16186509](#), PubMed:[29997207](#)). Enhances SYVN1 stability. Plays a role in LPL maturation and secretion. Required for normal differentiation of the pancreas epithelium, and for normal exocrine function and survival of pancreatic cells. May play a role in Notch signaling.

Cellular Location

Endoplasmic reticulum membrane; Single-pass type I membrane protein

Tissue Location

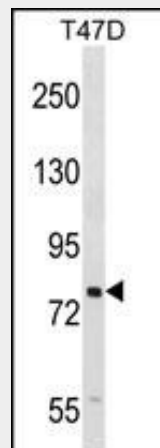
Highly expressed in pancreas.

SEL1L Antibody (N-term) - Protocols

Provided below are standard protocols that you may find useful for product applications.

- [Western Blot](#)
- [Blocking Peptides](#)
- [Dot Blot](#)
- [Immunohistochemistry](#)
- [Immunofluorescence](#)
- [Immunoprecipitation](#)
- [Flow Cytometry](#)
- [Cell Culture](#)

SEL1L Antibody (N-term) - Images



SEL1L Antibody (N-term) (Cat. #AP16575a) western blot analysis in T47D cell line lysates (35ug/lane). This demonstrates the SEL1L antibody detected the SEL1L protein (arrow).

SEL1L Antibody (N-term) - Background

SEL1L may play a role in Notch signaling (By similarity). May be involved in the endoplasmic reticulum quality control (ERQC) system also called ER-associated degradation (ERAD) involved in ubiquitin-dependent degradation of misfolded endoplasmic reticulum proteins.

SEL1L Antibody (N-term) - References

Ban, H.J., et al. BMC Genet. 11, 26 (2010) :

Riemer, J., et al. Proc. Natl. Acad. Sci. U.S.A. 106(35):14831-14836(2009)

Cormier, J.H., et al. Mol. Cell 34(5):627-633(2009)

Oresic, K., et al. Biosci. Rep. 29(3):173-181(2009)

Cattaneo, M., et al. J. Biol. Chem. 284(17):11405-11415(2009)