

HSD17B1 Antibody (C-term)
Affinity Purified Rabbit Polyclonal Antibody (Pab)
Catalog # AP16545b

Specification

HSD17B1 Antibody (C-term) - Product Information

Application	WB,E
Primary Accession	P14061
Other Accession	NP_000404.2
Reactivity	Human
Host	Rabbit
Clonality	Polyclonal
Isotype	Rabbit IgG
Calculated MW	34950
Antigen Region	227-256

HSD17B1 Antibody (C-term) - Additional Information

Gene ID 3292

Other Names

Estradiol 17-beta-dehydrogenase 1, 17-beta-hydroxysteroid dehydrogenase type 1, 17-beta-HSD 1, 20 alpha-hydroxysteroid dehydrogenase, 20-alpha-HSD, E2DH, Placental 17-beta-hydroxysteroid dehydrogenase, HSD17B1, E17KSR, EDH17B1, EDH17B2, EDHB17

Target/Specificity

This HSD17B1 antibody is generated from rabbits immunized with a KLH conjugated synthetic peptide between 227-256 amino acids from the C-terminal region of human HSD17B1.

Dilution

WB~~1:1000

Format

Purified polyclonal antibody supplied in PBS with 0.09% (W/V) sodium azide. This antibody is purified through a protein A column, followed by peptide affinity purification.

Storage

Maintain refrigerated at 2-8°C for up to 2 weeks. For long term storage store at -20°C in small aliquots to prevent freeze-thaw cycles.

Precautions

HSD17B1 Antibody (C-term) is for research use only and not for use in diagnostic or therapeutic procedures.

HSD17B1 Antibody (C-term) - Protein Information

Name HSD17B1 ([HGNC:5210](#))

Function Favors the reduction of estrogens and androgens. Converts estrone (E1) to a more potent estrogen, 17beta-estradiol (E2) (PubMed:[8994190](#)). Also has 20-alpha-HSD activity. Uses preferentially NADH.

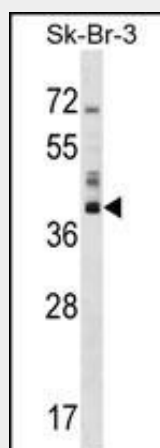
Cellular Location
Cytoplasm.

HSD17B1 Antibody (C-term) - Protocols

Provided below are standard protocols that you may find useful for product applications.

- [Western Blot](#)
- [Blocking Peptides](#)
- [Dot Blot](#)
- [Immunohistochemistry](#)
- [Immunofluorescence](#)
- [Immunoprecipitation](#)
- [Flow Cytometry](#)
- [Cell Culture](#)

HSD17B1 Antibody (C-term) - Images



HSD17B1 Antibody (C-term) (Cat. #AP16545b) western blot analysis in SK-BR-3 cell line lysates (35ug/lane). This demonstrates the HSD17B1 antibody detected the HSD17B1 protein (arrow).

HSD17B1 Antibody (C-term) - Background

Favors the reduction of estrogens and androgens. Also has 20-alpha-HSD activity. Uses preferentially NADH.

HSD17B1 Antibody (C-term) - References

Canzian, F., et al. Hum. Mol. Genet. 19(19):3873-3884(2010)
Liu, C.Y., et al. Carcinogenesis 31(7):1259-1263(2010)
Lamp, M., et al. Gynecol. Endocrinol. (2010) In press :
Haller, F., et al. J. Mol. Biol. 399(2):255-267(2010)
Iwasaki, M., et al. Nutr Cancer 62(4):466-475(2010)