

ISL2 Antibody (N-term)
Affinity Purified Rabbit Polyclonal Antibody (Pab)
Catalog # AP16528b**Specification**

ISL2 Antibody (N-term) - Product Information

Application	IF, WB,E
Primary Accession	O96A47
Other Accession	P50480 , O9CXV0 , NP_665804.1
Reactivity	Human
Predicted	Mouse, Rat
Host	Rabbit
Clonality	Polyclonal
Isotype	Rabbit IgG
Calculated MW	39768
Antigen Region	1-30

ISL2 Antibody (N-term) - Additional Information**Gene ID** 64843**Other Names**

Insulin gene enhancer protein ISL-2, Islet-2, ISL2

Target/Specificity

This ISL2 antibody is generated from rabbits immunized with a KLH conjugated synthetic peptide between 1-30 amino acids from the N-terminal region of human ISL2.

Dilution

IF~~1:10~50

WB~~1:1000

Format

Purified polyclonal antibody supplied in PBS with 0.09% (W/V) sodium azide. This antibody is purified through a protein A column, followed by peptide affinity purification.

Storage

Maintain refrigerated at 2-8°C for up to 2 weeks. For long term storage store at -20°C in small aliquots to prevent freeze-thaw cycles.

Precautions

ISL2 Antibody (N-term) is for research use only and not for use in diagnostic or therapeutic procedures.

ISL2 Antibody (N-term) - Protein Information**Name** ISL2

Function Transcriptional factor that defines subclasses of motoneurons that segregate into columns in the spinal cord and select distinct axon pathways.

Cellular Location

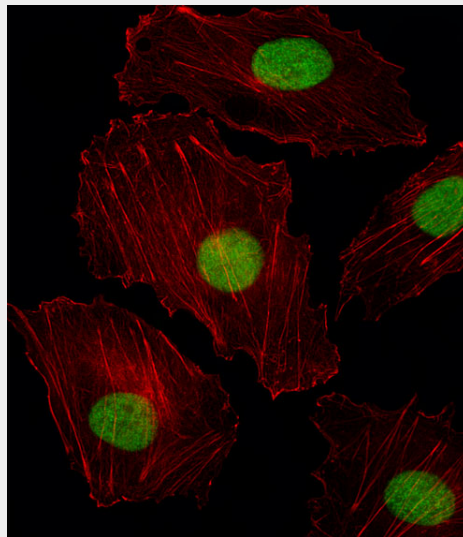
Nucleus {ECO:0000255|PROSITE-ProRule:PRU00108}.

ISL2 Antibody (N-term) - Protocols

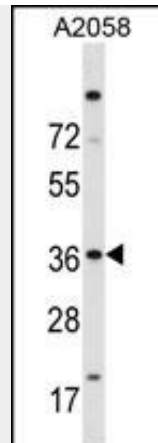
Provided below are standard protocols that you may find useful for product applications.

- [Western Blot](#)
- [Blocking Peptides](#)
- [Dot Blot](#)
- [Immunohistochemistry](#)
- [Immunofluorescence](#)
- [Immunoprecipitation](#)
- [Flow Cytometry](#)
- [Cell Culture](#)

ISL2 Antibody (N-term) - Images



Fluorescent image of HUVEC cell stained with ISL2 Antibody (N-term)(Cat#AP16528b).HUVEC cells were fixed with 4% PFA (20 min), permeabilized with Triton X-100 (0.1%, 10 min), then incubated with ISL2 primary antibody (1:25, 1 h at 37°C). For secondary antibody, Alexa Fluor® 488 conjugated donkey anti-rabbit antibody (green) was used (1:400, 50 min at 37°C).Cytoplasmic actin was counterstained with Alexa Fluor® 555 (red) conjugated Phalloidin (7units/ml, 1 h at 37°C).ISL2 immunoreactivity is localized to Nucleus significantly.



ISL2 Antibody (N-term) (Cat. #AP16528b) western blot analysis in A2058 cell line lysates (35ug/lane). This demonstrates the ISL2 antibody detected the ISL2 protein (arrow).

ISL2 Antibody (N-term) - Background

ISL2 is a transcriptional factor that defines subclasses of motoneurons that segregate into columns in the spinal cord and select distinct axon pathways (By similarity).

ISL2 Antibody (N-term) - References

- Li, Y., et al. Mol. Biol. Rep. 34(1):19-26(2007)
- Beausoleil, S.A., et al. Proc. Natl. Acad. Sci. U.S.A. 101(33):12130-12135(2004)
- Beausoleil, S.A., et al. Proc. Natl. Acad. Sci. U.S.A. 101(33):12130-12135(2004)
- Jurata, L.W., et al. J. Biol. Chem. 273(6):3152-3157(1998)