

**ADAM23 Antibody (C-term)**  
**Affinity Purified Rabbit Polyclonal Antibody (Pab)**  
**Catalog # AP16502B****Specification**

---

**ADAM23 Antibody (C-term) - Product Information**

Application	WB,E
Primary Accession	<a href="#">O75077</a>
Other Accession	<a href="#">O9R1V7</a> , <a href="#">NP_003803.1</a>
Reactivity	Human
Predicted	Mouse
Host	Rabbit
Clonality	Polyclonal
Isotype	Rabbit IgG
Calculated MW	91926
Antigen Region	803-831

**ADAM23 Antibody (C-term) - Additional Information****Gene ID** 8745**Other Names**

Disintegrin and metalloproteinase domain-containing protein 23, ADAM 23, Metalloproteinase-like, disintegrin-like, and cysteine-rich protein 3, MDC-3, ADAM23, MDC3

**Target/Specificity**

This ADAM23 antibody is generated from rabbits immunized with a KLH conjugated synthetic peptide between 803-831 amino acids from the C-terminal region of human ADAM23.

**Dilution**

WB~~1:1000

**Format**

Purified polyclonal antibody supplied in PBS with 0.09% (W/V) sodium azide. This antibody is purified through a protein A column, followed by peptide affinity purification.

**Storage**

Maintain refrigerated at 2-8°C for up to 2 weeks. For long term storage store at -20°C in small aliquots to prevent freeze-thaw cycles.

**Precautions**

ADAM23 Antibody (C-term) is for research use only and not for use in diagnostic or therapeutic procedures.

**ADAM23 Antibody (C-term) - Protein Information****Name** ADAM23

### Synonyms MDC3

**Function** May play a role in cell-cell and cell-matrix interactions. This is a non-catalytic metalloprotease-like protein.

### Cellular Location

Cell membrane; Single-pass type I membrane protein

### Tissue Location

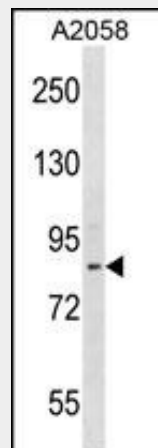
Highly expressed in the brain and weakly expressed in the heart. In the brain, expressed prominently in the amygdala, caudate nucleus, hypothalamus, thalamus, cerebral cortex and occipital pole.

### ADAM23 Antibody (C-term) - Protocols

Provided below are standard protocols that you may find useful for product applications.

- [Western Blot](#)
- [Blocking Peptides](#)
- [Dot Blot](#)
- [Immunohistochemistry](#)
- [Immunofluorescence](#)
- [Immunoprecipitation](#)
- [Flow Cytometry](#)
- [Cell Culture](#)

### ADAM23 Antibody (C-term) - Images



ADAM23 Antibody (C-term) (Cat. #AP16502b) western blot analysis in A2058 cell line lysates (35ug/lane). This demonstrates the ADAM23 antibody detected the ADAM23 protein (arrow).

### ADAM23 Antibody (C-term) - Background

This gene encodes a member of the ADAM (a disintegrin and metalloprotease domain) family. Members of this family are membrane-anchored proteins structurally related to snake venom disintegrins, and have been implicated in a variety of biological processes involving cell-cell and cell-matrix interactions, including fertilization, muscle development, and neurogenesis. This gene is highly expressed in the brain and may function as an

integrin ligand in the brain.

#### **ADAM23 Antibody (C-term) - References**

- Pan, Q., et al. Biochem. Biophys. Res. Commun. 401(2):306-312(2010)  
Rose, J.E., et al. Mol. Med. 16 (7-8), 247-253 (2010) :  
Ferreira, M.A., et al. Allergy 64(11):1623-1628(2009)  
Costa, M.D., et al. Neurosci. Lett. 461(1):16-20(2009)  
Verbisck, N.V., et al. Cancer Res. 69(13):5546-5552(2009)