

CRIP2 Antibody (C-term)
Affinity Purified Rabbit Polyclonal Antibody (Pab)
Catalog # AP16496b

Specification

CRIP2 Antibody (C-term) - Product Information

Application	WB,E
Primary Accession	P52943
Other Accession	NP_001303.1
Reactivity	Human
Host	Rabbit
Clonality	Polyclonal
Isotype	Rabbit IgG
Calculated MW	22493
Antigen Region	179-208

CRIP2 Antibody (C-term) - Additional Information

Gene ID 1397

Other Names

Cysteine-rich protein 2, CRP-2, Protein ESP1, CRIP2, CRP2

Target/Specificity

This CRIP2 antibody is generated from rabbits immunized with a KLH conjugated synthetic peptide between 179-208 amino acids from the C-terminal region of human CRIP2.

Dilution

WB~~1:1000

Format

Purified polyclonal antibody supplied in PBS with 0.09% (W/V) sodium azide. This antibody is purified through a protein A column, followed by peptide affinity purification.

Storage

Maintain refrigerated at 2-8°C for up to 2 weeks. For long term storage store at -20°C in small aliquots to prevent freeze-thaw cycles.

Precautions

CRIP2 Antibody (C-term) is for research use only and not for use in diagnostic or therapeutic procedures.

CRIP2 Antibody (C-term) - Protein Information

Name CRIP2

Synonyms CRP2

Tissue Location

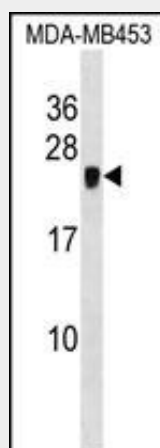
Widespread tissue expression; highest levels in the heart

CRIP2 Antibody (C-term) - Protocols

Provided below are standard protocols that you may find useful for product applications.

- [Western Blot](#)
- [Blocking Peptides](#)
- [Dot Blot](#)
- [Immunohistochemistry](#)
- [Immunofluorescence](#)
- [Immunoprecipitation](#)
- [Flow Cytometry](#)
- [Cell Culture](#)

CRIP2 Antibody (C-term) - Images



CRIP2 Antibody (C-term) (Cat. #AP16496b) western blot analysis in MDA-MB453 cell line lysates (35ug/lane). This demonstrates the CRIP2 antibody detected the CRIP2 protein (arrow).

CRIP2 Antibody (C-term) - Background

CRIP2 is a 208-amino acid protein containing 2 LIM domains and shares 93% amino acid sequence identity with its rat homolog, called Esp1 or Crp2. Northern blot analysis showed widespread tissue expression of the 1.3-kb CRIP2 mRNA, with the highest level of expression found in heart. In testis, a second 1.7-kb mRNA was also detected.

CRIP2 Antibody (C-term) - References

Tanabe, C., et al. *Biochem. Biophys. Res. Commun.* 396(4):927-932(2010)
Rikova, K., et al. *Cell* 131(6):1190-1203(2007)
Lim, J., et al. *Cell* 125(4):801-814(2006)
van Ham, M., et al. *Genes Cells* 8(7):631-644(2003)
Chang, D.F., et al. *Dev. Cell* 4(1):107-118(2003)