

MTA3 Antibody (C-term)
Affinity Purified Rabbit Polyclonal Antibody (Pab)
Catalog # AP16492b

Specification

MTA3 Antibody (C-term) - Product Information

Application	WB,E
Primary Accession	O9BTC8
Other Accession	A6QL72 , NP_065795.1
Reactivity	Human
Predicted	Bovine
Host	Rabbit
Clonality	Polyclonal
Isotype	Rabbit IgG
Calculated MW	67504
Antigen Region	559-587

MTA3 Antibody (C-term) - Additional Information

Gene ID 57504

Other Names

Metastasis-associated protein MTA3, MTA3, KIAA1266

Target/Specificity

This MTA3 antibody is generated from rabbits immunized with a KLH conjugated synthetic peptide between 559-587 amino acids from the C-terminal region of human MTA3.

Dilution

WB~~1:1000

Format

Purified polyclonal antibody supplied in PBS with 0.09% (W/V) sodium azide. This antibody is purified through a protein A column, followed by peptide affinity purification.

Storage

Maintain refrigerated at 2-8°C for up to 2 weeks. For long term storage store at -20°C in small aliquots to prevent freeze-thaw cycles.

Precautions

MTA3 Antibody (C-term) is for research use only and not for use in diagnostic or therapeutic procedures.

MTA3 Antibody (C-term) - Protein Information

Name MTA3

Synonyms KIAA1266

Function Acts as a component of the histone deacetylase NuRD complex which participates in the remodeling of chromatin (PubMed:[12705869](#), PubMed:[16428440](#), PubMed:[28977666](#)). Plays a role in maintenance of the normal epithelial architecture through the repression of SNAI1 transcription in a histone deacetylase-dependent manner, and thus the regulation of E-cadherin levels (PubMed:[12705869](#)). Contributes to transcriptional repression by BCL6 (PubMed:[15454082](#)).

Cellular Location

Nucleus {ECO:0000255|PROSITE-ProRule:PRU00512, ECO:0000255|PROSITE-ProRule:PRU00624, ECO:0000269|PubMed:12705869, ECO:0000269|PubMed:28977666, ECO:0000269|PubMed:33283408}. Cytoplasm {ECO:0000250|UniProtKB:Q924K8}

Tissue Location

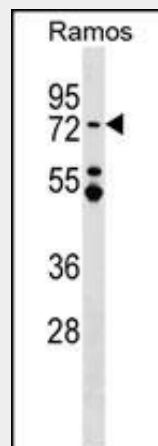
Expressed in germinal centers of lymphoid tissues. No expression in nonepithelial cells.

MTA3 Antibody (C-term) - Protocols

Provided below are standard protocols that you may find useful for product applications.

- [Western Blot](#)
- [Blocking Peptides](#)
- [Dot Blot](#)
- [Immunohistochemistry](#)
- [Immunofluorescence](#)
- [Immunoprecipitation](#)
- [Flow Cytometry](#)
- [Cell Culture](#)

MTA3 Antibody (C-term) - Images



MTA3 Antibody (C-term) (Cat. #AP16492b) western blot analysis in Ramos cell line lysates (35ug/lane). This demonstrates the MTA3 antibody detected the MTA3 protein (arrow).

MTA3 Antibody (C-term) - Background

MTA3 plays a role in maintenance of the normal epithelial architecture through the repression of SNAI1 transcription in a histone deacetylase-dependent manner, and thus the regulation of E-cadherin levels.

MTA3 Antibody (C-term) - References

Bruning, A., et al. Histochem. Cell Biol. 132(1):33-38(2009)
Lasky-Su, J., et al. Am. J. Med. Genet. B Neuropsychiatr. Genet. 147B (8), 1345-1354 (2008) :
Zhang, H., et al. Genes Dev. 20(21):2943-2948(2006)
Yu, J.C., et al. J. Biomed. Sci. 13(3):419-432(2006)
Fujita, N., et al. Cell 119(1):75-86(2004)