

**DDX53 Antibody (C-term)**  
**Affinity Purified Rabbit Polyclonal Antibody (Pab)**  
**Catalog # AP16481b**

## Specification

---

### DDX53 Antibody (C-term) - Product Information

Application	WB,E
Primary Accession	<a href="#">Q86TM3</a>
Other Accession	<a href="#">NP_874358.2</a>
Reactivity	Human
Host	Rabbit
Clonality	Polyclonal
Isotype	Rabbit IgG
Calculated MW	71154
Antigen Region	590-619

### DDX53 Antibody (C-term) - Additional Information

**Gene ID** 168400

#### Other Names

Probable ATP-dependent RNA helicase DDX53, Cancer-associated gene protein, Cancer/testis antigen 26, CT26, DEAD box protein 53, DEAD box protein CAGE, DDX53, CAGE

#### Target/Specificity

This DDX53 antibody is generated from rabbits immunized with a KLH conjugated synthetic peptide between 590-619 amino acids from the C-terminal region of human DDX53.

#### Dilution

WB~~1:1000

#### Format

Purified polyclonal antibody supplied in PBS with 0.09% (W/V) sodium azide. This antibody is purified through a protein A column, followed by peptide affinity purification.

#### Storage

Maintain refrigerated at 2-8°C for up to 2 weeks. For long term storage store at -20°C in small aliquots to prevent freeze-thaw cycles.

#### Precautions

DDX53 Antibody (C-term) is for research use only and not for use in diagnostic or therapeutic procedures.

### DDX53 Antibody (C-term) - Protein Information

**Name** DDX53

**Synonyms** CAGE

**Cellular Location**

Nucleus.

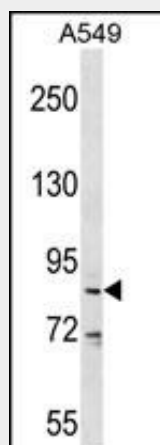
**Tissue Location**

Expressed in testis. Wide expression in various cancer tissues and cancer cell lines.

**DDX53 Antibody (C-term) - Protocols**

Provided below are standard protocols that you may find useful for product applications.

- [Western Blot](#)
- [Blocking Peptides](#)
- [Dot Blot](#)
- [Immunohistochemistry](#)
- [Immunofluorescence](#)
- [Immunoprecipitation](#)
- [Flow Cytometry](#)
- [Cell Culture](#)

**DDX53 Antibody (C-term) - Images**

DDX53 Antibody (C-term) (Cat. #AP16481b) western blot analysis in A549 cell line lysates (35ug/lane). This demonstrates the DDX53 antibody detected the DDX53 protein (arrow).

**DDX53 Antibody (C-term) - Background**

DDX53 belongs to the DEAD box helicase family. It is expressed in testis and shows wide expression in various cancer tissues and cancer cell lines.

**DDX53 Antibody (C-term) - References**

- Kim, Y., et al. J. Biol. Chem. 285(34):25957-25968(2010)  
Pinto, D., et al. Nature 466(7304):368-372(2010)  
Kim, Y., et al. J. Microbiol. Biotechnol. 18(3):600-610(2008)  
Lee, T.S., et al. Ann. N. Y. Acad. Sci. 1091, 218-224 (2006) :  
Shim, H., et al. Biotechnol. Lett. 28(24):2057-2063(2006)