

CNTROB Antibody (Center)
Affinity Purified Rabbit Polyclonal Antibody (Pab)
Catalog # AP16471c

Specification

CNTROB Antibody (Center) - Product Information

Application	WB,E
Primary Accession	Q8N137
Other Accession	NP_444279.2
Reactivity	Human, Mouse
Host	Rabbit
Clonality	Polyclonal
Isotype	Rabbit IgG
Calculated MW	101253
Antigen Region	401-430

CNTROB Antibody (Center) - Additional Information

Gene ID 116840

Other Names

Centrobin, Centrosomal BRCA2-interacting protein, LYST-interacting protein 8, CNTROB, LIP8

Target/Specificity

This CNTROB antibody is generated from rabbits immunized with a KLH conjugated synthetic peptide between 401-430 amino acids from the Central region of human CNTROB.

Dilution

WB~~1:1000

Format

Purified polyclonal antibody supplied in PBS with 0.09% (W/V) sodium azide. This antibody is purified through a protein A column, followed by peptide affinity purification.

Storage

Maintain refrigerated at 2-8°C for up to 2 weeks. For long term storage store at -20°C in small aliquots to prevent freeze-thaw cycles.

Precautions

CNTROB Antibody (Center) is for research use only and not for use in diagnostic or therapeutic procedures.

CNTROB Antibody (Center) - Protein Information

Name CNTROB

Synonyms LIP8

Function Required for centriole duplication. Inhibition of centriole duplication leading to defects in cytokinesis.

Cellular Location

Cytoplasm, cytoskeleton, microtubule organizing center, centrosome, centriole
Note=Centriole-associated, asymmetrically localizes to the daughter centriole

Tissue Location

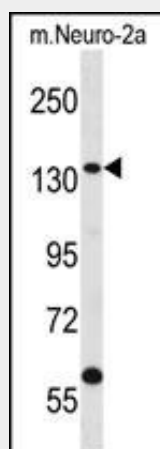
Widely expressed (at protein level). Highly expressed in testis. Also expressed in spleen, thymus, prostate, small intestine, colon and peripheral blood leukocytes

CNTROB Antibody (Center) - Protocols

Provided below are standard protocols that you may find useful for product applications.

- [Western Blot](#)
- [Blocking Peptides](#)
- [Dot Blot](#)
- [Immunohistochemistry](#)
- [Immunofluorescence](#)
- [Immunoprecipitation](#)
- [Flow Cytometry](#)
- [Cell Culture](#)

CNTROB Antibody (Center) - Images



CNTROB Antibody (Center) (Cat. #AP16471c) western blot analysis in mouse Neuro-2a cell line lysates (35ug/lane). This demonstrates the CNTROB antibody detected the CNTROB protein (arrow).

CNTROB Antibody (Center) - Background

CNTROB is a centrosomal protein that interacts with BRCA2 (MIM 600185) and is required for centriole duplication and cytokinesis (Zou et al., 2005 [PubMed 16275750]). [supplied by OMIM].

CNTROB Antibody (Center) - References

Lee, J., et al. J. Biol. Chem. 285(33):25476-25484(2010)

Olson, J.E., et al. Breast Cancer Res. Treat. (2010) In press :
Jeffery, J.M., et al. Oncogene 29(18):2649-2658(2010)
Song, L., et al. Cell. Signal. 22(5):857-864(2010)
Jeong, Y., et al. J. Cell. Sci. 120 (PT 12), 2106-2116 (2007) :