

**RAD52 Antibody (C-term)**  
**Affinity Purified Rabbit Polyclonal Antibody (Pab)**  
**Catalog # AP16470b**

**Specification**

---

**RAD52 Antibody (C-term) - Product Information**

Application	WB,E
Primary Accession	<a href="#">P43351</a>
Other Accession	<a href="#">NP_602296.2</a>
Reactivity	Human
Host	Rabbit
Clonality	Polyclonal
Isotype	Rabbit IgG
Calculated MW	46169
Antigen Region	387-416

**RAD52 Antibody (C-term) - Additional Information**

**Gene ID** 5893

**Other Names**

DNA repair protein RAD52 homolog, RAD52

**Target/Specificity**

This RAD52 antibody is generated from rabbits immunized with a KLH conjugated synthetic peptide between 387-416 amino acids from the C-terminal region of human RAD52.

**Dilution**

WB~~1:1000

**Format**

Purified polyclonal antibody supplied in PBS with 0.09% (W/V) sodium azide. This antibody is purified through a protein A column, followed by peptide affinity purification.

**Storage**

Maintain refrigerated at 2-8°C for up to 2 weeks. For long term storage store at -20°C in small aliquots to prevent freeze-thaw cycles.

**Precautions**

RAD52 Antibody (C-term) is for research use only and not for use in diagnostic or therapeutic procedures.

**RAD52 Antibody (C-term) - Protein Information**

**Name** RAD52

**Function** Involved in double-stranded break repair. Plays a central role in genetic recombination and DNA repair by promoting the annealing of complementary single-stranded DNA and by

stimulation of the RAD51 recombinase.

#### Cellular Location

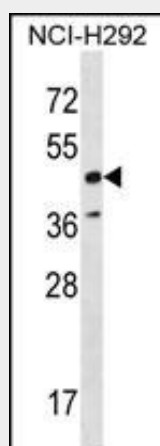
Nucleus.

#### RAD52 Antibody (C-term) - Protocols

Provided below are standard protocols that you may find useful for product applications.

- [Western Blot](#)
- [Blocking Peptides](#)
- [Dot Blot](#)
- [Immunohistochemistry](#)
- [Immunofluorescence](#)
- [Immunoprecipitation](#)
- [Flow Cytometry](#)
- [Cell Culture](#)

#### RAD52 Antibody (C-term) - Images



RAD52 Antibody (C-term) (Cat. #AP16470b) western blot analysis in NCI-H292 cell line lysates (35ug/lane). This demonstrates the RAD52 antibody detected the RAD52 protein (arrow).

#### RAD52 Antibody (C-term) - Background

The protein encoded by this gene shares similarity with *Saccharomyces cerevisiae* Rad52, a protein important for DNA double-strand break repair and homologous recombination. This gene product was shown to bind single-stranded DNA ends, and mediate the DNA-DNA interaction necessary for the annealing of complementary DNA strands. It was also found to interact with DNA recombination protein RAD51, which suggested its role in RAD51 related DNA recombination and repair.

#### RAD52 Antibody (C-term) - References

Liu, Y., et al. *Carcinogenesis* 31(10):1762-1769(2010)  
Ho-Pun-Cheung, A., et al. *Pharmacogenomics J.* (2010) In press :  
Briggs, F.B., et al. *Am. J. Epidemiol.* 172(2):217-224(2010)  
Liu, C.Y., et al. *Carcinogenesis* 31(7):1259-1263(2010)

Monsees, G.M., et al. Breast Cancer Res. Treat. (2010) In press :