

GK5 Antibody (N-term)
Affinity Purified Rabbit Polyclonal Antibody (Pab)
Catalog # AP16457a

Specification

GK5 Antibody (N-term) - Product Information

Application	WB,E
Primary Accession	O6ZS86
Other Accession	NP_001034636.1
Reactivity	Human
Host	Rabbit
Clonality	Polyclonal
Isotype	Rabbit IgG
Calculated MW	59156
Antigen Region	1-30

GK5 Antibody (N-term) - Additional Information

Gene ID 256356

Other Names

Putative glycerol kinase 5, GK 5, Glycerokinase 5, ATP:glycerol 3-phosphotransferase 5, GK5

Target/Specificity

This GK5 antibody is generated from rabbits immunized with a KLH conjugated synthetic peptide between 1-30 amino acids from the N-terminal region of human GK5.

Dilution

WB~~1:1000

Format

Purified polyclonal antibody supplied in PBS with 0.09% (W/V) sodium azide. This antibody is purified through a protein A column, followed by peptide affinity purification.

Storage

Maintain refrigerated at 2-8°C for up to 2 weeks. For long term storage store at -20°C in small aliquots to prevent freeze-thaw cycles.

Precautions

GK5 Antibody (N-term) is for research use only and not for use in diagnostic or therapeutic procedures.

GK5 Antibody (N-term) - Protein Information

Name GK5 ([HGNC:28635](#))

Function Skin-specific kinase that plays a key role in glycerol metabolism, catalyzing its phosphorylation to produce sn-glycerol 3- phosphate. Involved in skin-specific regulation of sterol

regulatory element-binding protein (SREBP) processing and lipid biosynthesis.

Cellular Location

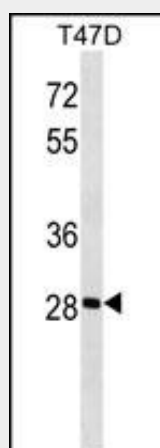
Cytoplasm {ECO:0000250|UniProtKB:Q8BX05}.

GK5 Antibody (N-term) - Protocols

Provided below are standard protocols that you may find useful for product applications.

- [Western Blot](#)
- [Blocking Peptides](#)
- [Dot Blot](#)
- [Immunohistochemistry](#)
- [Immunofluorescence](#)
- [Immunoprecipitation](#)
- [Flow Cytometry](#)
- [Cell Culture](#)

GK5 Antibody (N-term) - Images



GK5 Antibody (N-term) (Cat. #AP16457a) western blot analysis in T47D cell line lysates (35ug/lane). This demonstrates the GK5 antibody detected the GK5 protein (arrow).

GK5 Antibody (N-term) - Background

GK5 belongs to the FGGY kinase family.

GK5 Antibody (N-term) - References

Strausberg, R.L., et al. Proc. Natl. Acad. Sci. U.S.A. 99(26):16899-16903(2002)