

ARMCX1 Antibody (Center)
Affinity Purified Rabbit Polyclonal Antibody (Pab)
Catalog # AP16440c

Specification

ARMCX1 Antibody (Center) - Product Information

| | |
|-------------------|-----------------------------|
| Application | WB,E |
| Primary Accession | O9P291 |
| Other Accession | NP_057692.1 |
| Reactivity | Human |
| Host | Rabbit |
| Clonality | Polyclonal |
| Isotype | Rabbit IgG |
| Calculated MW | 49180 |
| Antigen Region | 239-268 |

ARMCX1 Antibody (Center) - Additional Information

Gene ID 51309

Other Names

Armadillo repeat-containing X-linked protein 1, ARM protein lost in epithelial cancers on chromosome X 1, Protein ALEX1, ARMCX1, ALEX1

Target/Specificity

This ARMCX1 antibody is generated from rabbits immunized with a KLH conjugated synthetic peptide between 239-268 amino acids from the Central region of human ARMCX1.

Dilution

WB~~1:1000

Format

Purified polyclonal antibody supplied in PBS with 0.09% (W/V) sodium azide. This antibody is purified through a protein A column, followed by peptide affinity purification.

Storage

Maintain refrigerated at 2-8°C for up to 2 weeks. For long term storage store at -20°C in small aliquots to prevent freeze-thaw cycles.

Precautions

ARMCX1 Antibody (Center) is for research use only and not for use in diagnostic or therapeutic procedures.

ARMCX1 Antibody (Center) - Protein Information

Name ARMCX1

Synonyms ALEX1

Function Regulates mitochondrial transport during axon regeneration. Increases the proportion of motile mitochondria by recruiting stationary mitochondria into the motile pool. Enhances mitochondria movement and neurite growth in both adult axons and embryonic neurons. Promotes neuronal survival and axon regeneration after nerve injury. May link mitochondria to the Trak1-kinesin motor complex via its interaction with MIRO1.

Cellular Location

Mitochondrion {ECO:0000250|UniProtKB:Q9CX83}. Mitochondrion outer membrane {ECO:0000250|UniProtKB:Q9CX83}; Single- pass membrane protein

Tissue Location

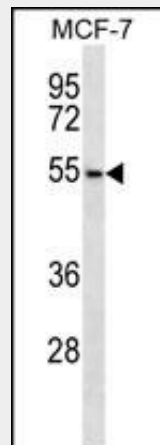
Expressed at high levels ovary, heart, testis, prostate, brain, spleen and colon. Expressed at very low levels in liver and thymus. Not expressed in peripheral blood leukocytes. Not or reduced expressed in lung, prostate, colon, pancreas and ovarian carcinomas.

ARMCX1 Antibody (Center) - Protocols

Provided below are standard protocols that you may find useful for product applications.

- [Western Blot](#)
- [Blocking Peptides](#)
- [Dot Blot](#)
- [Immunohistochemistry](#)
- [Immunofluorescence](#)
- [Immunoprecipitation](#)
- [Flow Cytometry](#)
- [Cell Culture](#)

ARMCX1 Antibody (Center) - Images



ARMCX1 Antibody (Center) (Cat. #AP16440c) western blot analysis in MCF-7 cell line lysates (35ug/lane). This demonstrates the ARMCX1 antibody detected the ARMCX1 protein (arrow).

ARMCX1 Antibody (Center) - Background

ARMCX1 is a member of the ALEX family of proteins and may play a role in tumor suppression. The encoded protein contains a potential N-terminal transmembrane domain and two Armadillo (arm) repeats. Other proteins containing the arm repeat are involved in development, maintenance of tissue integrity, and

tumorigenesis. This gene is closely localized with other family members, including ALEX2 and ALEX3, on the X chromosome. [provided by RefSeq].

ARMCX1 Antibody (Center) - References

Iseki, H., et al. Cancer Sci. 101(6):1361-1366(2010)

Ross, M.T., et al. Nature 434(7031):325-337(2005)

Kurochkin, I.V., et al. Biochem. Biophys. Res. Commun. 280(1):340-347(2001)