

**KLHL25 Antibody (N-term)**  
**Affinity Purified Rabbit Polyclonal Antibody (Pab)**  
**Catalog # AP16430a**

## Specification

---

### KLHL25 Antibody (N-term) - Product Information

Application	WB,E
Primary Accession	<a href="#">O9H0H3</a>
Other Accession	<a href="#">O4KLM4</a> , <a href="#">O8R2P1</a> , <a href="#">NP_071925.2</a>
Reactivity	Human
Predicted	Mouse, Rat
Host	Rabbit
Clonality	Polyclonal
Isotype	Rabbit IgG
Calculated MW	65923
Antigen Region	62-91

### KLHL25 Antibody (N-term) - Additional Information

**Gene ID** 64410

#### Other Names

Kelch-like protein 25, Ectoderm-neural cortex protein 2, ENC-2, KLHL25, ENC2

#### Target/Specificity

This KLHL25 antibody is generated from rabbits immunized with a KLH conjugated synthetic peptide between 62-91 amino acids from the N-terminal region of human KLHL25.

#### Dilution

WB~~1:1000

#### Format

Purified polyclonal antibody supplied in PBS with 0.09% (W/V) sodium azide. This antibody is purified through a protein A column, followed by peptide affinity purification.

#### Storage

Maintain refrigerated at 2-8°C for up to 2 weeks. For long term storage store at -20°C in small aliquots to prevent freeze-thaw cycles.

#### Precautions

KLHL25 Antibody (N-term) is for research use only and not for use in diagnostic or therapeutic procedures.

### KLHL25 Antibody (N-term) - Protein Information

**Name** KLHL25 {ECO:0000303|PubMed:22578813, ECO:0000312|HGNC:HGNC:25732}

**Function** Substrate-specific adapter of a BCR (BTB-CUL3-RBX1) E3 ubiquitin ligase complex

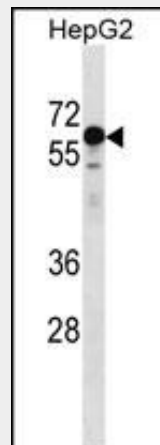
involved in various processes, such as translation homeostasis and lipid synthesis (PubMed:[22578813](#), PubMed:[27664236](#), PubMed:[34491895](#)). The BCR(KLHL25) ubiquitin ligase complex acts by mediating ubiquitination of hypophosphorylated EIF4EBP1 (4E-BP1): ubiquitination and subsequent degradation of hypophosphorylated EIF4EBP1 (4E-BP1) probably serves as a homeostatic mechanism to maintain translation and prevent eIF4E inhibition when eIF4E levels are low (PubMed:[22578813](#)). The BCR(KLHL25) complex does not target EIF4EBP1 (4E-BP1) when it is hyperphosphorylated or associated with eIF4E (PubMed:[22578813](#)). The BCR(KLHL25) complex also acts as a regulator of lipid synthesis by mediating ubiquitination and degradation of ACLY, thereby inhibiting lipid synthesis (PubMed:[27664236](#), PubMed:[34491895](#)). BCR(KLHL25)-mediated degradation of ACLY promotes fatty acid oxidation and is required for differentiation of inducible regulatory T (iTreg) cells (PubMed:[34491895](#)).

### KLHL25 Antibody (N-term) - Protocols

Provided below are standard protocols that you may find useful for product applications.

- [Western Blot](#)
- [Blocking Peptides](#)
- [Dot Blot](#)
- [Immunohistochemistry](#)
- [Immunofluorescence](#)
- [Immunoprecipitation](#)
- [Flow Cytometry](#)
- [Cell Culture](#)

### KLHL25 Antibody (N-term) - Images



KLHL25 Antibody (N-term) (Cat. #AP16430a) western blot analysis in HepG2 cell line lysates (35ug/lane). This demonstrates the KLHL25 antibody detected the KLHL25 protein (arrow).

### KLHL25 Antibody (N-term) - References

Lunetta, K.L., et al. BMC Med. Genet. 8 SUPPL 1, S13 (2007) :  
Simpson, J.C., et al. EMBO Rep. 1(3):287-292(2000)