

SNAPC2 Antibody (C-term)
Affinity Purified Rabbit Polyclonal Antibody (Pab)
Catalog # AP16427b

Specification

SNAPC2 Antibody (C-term) - Product Information

Application	WB,E
Primary Accession	O13487
Other Accession	NP_003074.1
Reactivity	Human
Host	Rabbit
Clonality	Polyclonal
Isotype	Rabbit IgG
Calculated MW	35556
Antigen Region	278-307

SNAPC2 Antibody (C-term) - Additional Information

Gene ID 6618

Other Names

snRNA-activating protein complex subunit 2, SNAPc subunit 2, Proximal sequence element-binding transcription factor subunit delta, PSE-binding factor subunit delta, PTF subunit delta, Small nuclear RNA-activating complex polypeptide 2, snRNA-activating protein complex 45 kDa subunit, SNAPc 45 kDa subunit, SNAPC2, SNAP45

Target/Specificity

This SNAPC2 antibody is generated from rabbits immunized with a KLH conjugated synthetic peptide between 278-307 amino acids from the C-terminal region of human SNAPC2.

Dilution

WB~~1:1000

Format

Purified polyclonal antibody supplied in PBS with 0.09% (W/V) sodium azide. This antibody is purified through a protein A column, followed by peptide affinity purification.

Storage

Maintain refrigerated at 2-8°C for up to 2 weeks. For long term storage store at -20°C in small aliquots to prevent freeze-thaw cycles.

Precautions

SNAPC2 Antibody (C-term) is for research use only and not for use in diagnostic or therapeutic procedures.

SNAPC2 Antibody (C-term) - Protein Information

Name SNAPC2

Synonyms SNAP45

Function Part of the SNAPc complex required for the transcription of both RNA polymerase II and III small-nuclear RNA genes. Binds to the proximal sequence element (PSE), a non-TATA-box basal promoter element common to these 2 types of genes. Recruits TBP and BRF2 to the U6 snRNA TATA box.

Cellular Location

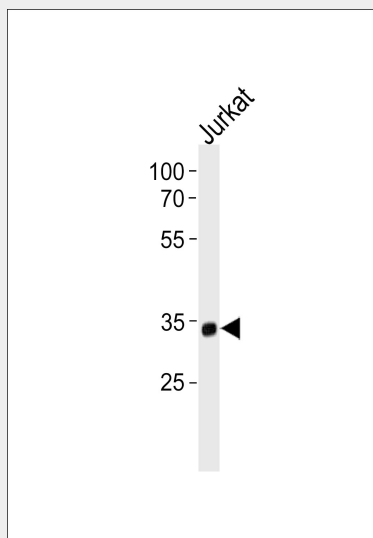
Nucleus.

SNAPC2 Antibody (C-term) - Protocols

Provided below are standard protocols that you may find useful for product applications.

- [Western Blot](#)
- [Blocking Peptides](#)
- [Dot Blot](#)
- [Immunohistochemistry](#)
- [Immunofluorescence](#)
- [Immunoprecipitation](#)
- [Flow Cytometry](#)
- [Cell Culture](#)

SNAPC2 Antibody (C-term) - Images



SNAPC2 Antibody (C-term) (Cat. #AP16427b) western blot analysis in Jurkat cell line lysates (35ug/lane). This demonstrates the SNAPC2 antibody detected the SNAPC2 protein (arrow).

SNAPC2 Antibody (C-term) - Background

SNAPC2 is a subunit of the snRNA-activating protein complex which is associated with the TATA box-binding protein. The encoded protein is necessary for RNA polymerase II and III dependent small-nuclear RNA gene transcription. Alternative splicing results in multiple transcript variants. [provided by RefSeq].

SNAPC2 Antibody (C-term) - References

- Shanmugam, M., et al. J. Biol. Chem. 283(21):14845-14856(2008)
Emran, F., et al. Gene 377, 96-108 (2006) :
Hinkley, C.S., et al. J. Biol. Chem. 278(20):18649-18657(2003)
Acierno, J.S. Jr., et al. Genomics 73(2):203-210(2001)
Ma, B., et al. J. Biol. Chem. 276(7):5027-5035(2001)