

PRPS2 Antibody (Center)
Affinity Purified Rabbit Polyclonal Antibody (Pab)
Catalog # AP16421c

Specification

PRPS2 Antibody (Center) - Product Information

Application	WB,E
Primary Accession	P11908
Other Accession	Q7ZXC9 , P09330 , Q9CS42 , Q4R4R7 , P60892 , Q9D7G0 , Q4R4U3 , P60891 , Q2HJ58 , P38063 , P38620 , NP_001034180.1
Reactivity	Human
Predicted	Yeast, Bovine, Monkey, Mouse, Rat, Xenopus
Host	Rabbit
Clonality	Polyclonal
Isotype	Rabbit IgG
Calculated MW	34769
Antigen Region	77-106

PRPS2 Antibody (Center) - Additional Information

Gene ID 5634

Other Names

Ribose-phosphate pyrophosphokinase 2, PPRibP, Phosphoribosyl pyrophosphate synthase II, PRS-II, PRPS2

Target/Specificity

This PRPS2 antibody is generated from rabbits immunized with a KLH conjugated synthetic peptide between 77-106 amino acids from the Central region of human PRPS2.

Dilution

WB~~1:1000

Format

Purified polyclonal antibody supplied in PBS with 0.09% (W/V) sodium azide. This antibody is purified through a protein A column, followed by peptide affinity purification.

Storage

Maintain refrigerated at 2-8°C for up to 2 weeks. For long term storage store at -20°C in small aliquots to prevent freeze-thaw cycles.

Precautions

PRPS2 Antibody (Center) is for research use only and not for use in diagnostic or therapeutic procedures.

PRPS2 Antibody (Center) - Protein Information

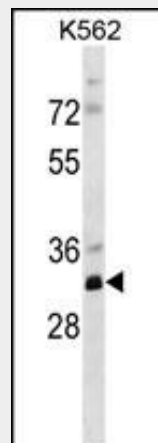
Name PRPS2

Function Catalyzes the synthesis of phosphoribosylpyrophosphate (PRPP) that is essential for nucleotide synthesis.

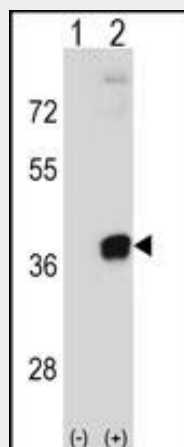
PRPS2 Antibody (Center) - Protocols

Provided below are standard protocols that you may find useful for product applications.

- [Western Blot](#)
- [Blocking Peptides](#)
- [Dot Blot](#)
- [Immunohistochemistry](#)
- [Immunofluorescence](#)
- [Immunoprecipitation](#)
- [Flow Cytometry](#)
- [Cell Culture](#)

PRPS2 Antibody (Center) - Images

PRPS2 Antibody (Center) (Cat. #AP16421c) western blot analysis in K562 cell line lysates (35ug/lane). This demonstrates the PRPS2 antibody detected the PRPS2 protein (arrow).



Western blot analysis of PRPS2 (arrow) using rabbit polyclonal PRPS2 Antibody (Center) (Cat. #AP16421c). 293 cell lysates (2 ug/lane) either nontransfected (Lane 1) or transiently transfected

(Lane 2) with the PRPS2 gene.

PRPS2 Antibody (Center) - Background

PRPS2 is a phosphoribosyl pyrophosphate synthetase that plays a central role in the synthesis of purines and pyrimidines. The encoded protein catalyzes the synthesis of 5-phosphoribosyl 1-pyrophosphate from ATP and D-ribose 5-phosphate. Alternate splicing results in multiple transcript variants.

PRPS2 Antibody (Center) - References

Mannava, S., et al. Cell Cycle 7(15):2392-2400(2008)
Tatibana, M., et al. Adv. Enzyme Regul. 35, 229-249 (1995) :
Dawson, S.J., et al. J. Infect. 24(3):317-320(1992)
Ishizuka, T., et al. Biochim. Biophys. Acta 1130(2):139-148(1992)
Becker, M.A., et al. Genomics 8(3):555-561(1990)