

**ERH Antibody (N-term)**  
**Affinity Purified Rabbit Polyclonal Antibody (Pab)**  
**Catalog # AP16418A**

**Specification**

---

**ERH Antibody (N-term) - Product Information**

Application	WB,E
Primary Accession	<a href="#">P84090</a>
Other Accession	<a href="#">P84089</a> , <a href="#">Q98874</a> , <a href="#">Q3SZC0</a> , <a href="#">NP_004441.1</a>
Reactivity	Human
Predicted	Bovine, Zebrafish, Mouse
Host	Rabbit
Clonality	Polyclonal
Isotype	Rabbit IgG
Calculated MW	12259
Antigen Region	1-30

**ERH Antibody (N-term) - Additional Information**

**Gene ID** 2079

**Other Names**

Enhancer of rudimentary homolog, ERH

**Target/Specificity**

This ERH antibody is generated from rabbits immunized with a KLH conjugated synthetic peptide between 1-30 amino acids from the N-terminal region of human ERH.

**Dilution**

WB~~1:1000

**Format**

Purified polyclonal antibody supplied in PBS with 0.09% (W/V) sodium azide. This antibody is purified through a protein A column, followed by peptide affinity purification.

**Storage**

Maintain refrigerated at 2-8°C for up to 2 weeks. For long term storage store at -20°C in small aliquots to prevent freeze-thaw cycles.

**Precautions**

ERH Antibody (N-term) is for research use only and not for use in diagnostic or therapeutic procedures.

**ERH Antibody (N-term) - Protein Information**

**Name** ERH

**Function** May have a role in the cell cycle.

### Cellular Location

Nucleus.

### Tissue Location

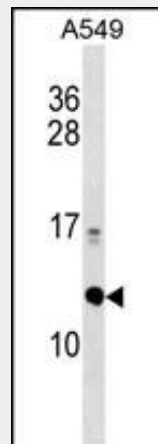
Expressed in all tissues examined.

### ERH Antibody (N-term) - Protocols

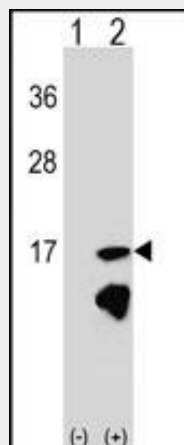
Provided below are standard protocols that you may find useful for product applications.

- [Western Blot](#)
- [Blocking Peptides](#)
- [Dot Blot](#)
- [Immunohistochemistry](#)
- [Immunofluorescence](#)
- [Immunoprecipitation](#)
- [Flow Cytometry](#)
- [Cell Culture](#)

### ERH Antibody (N-term) - Images



ERH Antibody (N-term) (Cat. #AP16418a) western blot analysis in A549 cell line lysates (35ug/lane). This demonstrates the ERH antibody detected the ERH protein (arrow).



Western blot analysis of ERH (arrow) using rabbit polyclonal ERH Antibody (N-term) (Cat.

#AP16418a). 293 cell lysates (2 ug/lane) either nontransfected (Lane 1) or transiently transfected (Lane 2) with the ERH gene.

#### **ERH Antibody (N-term) - Background**

ERH may have a role in the cell cycle.

#### **ERH Antibody (N-term) - References**

Lukasik, A., et al. FEBS J. 275(2):332-340(2008)  
Zafrakas, M., et al. BMC Cancer 8, 145 (2008) :  
Jin, T., et al. Proteins 68(2):427-437(2007)  
Ewing, R.M., et al. Mol. Syst. Biol. 3, 89 (2007) :  
Stelzl, U., et al. Cell 122(6):957-968(2005)