

**CD226 Antibody (C-term)**  
**Affinity Purified Rabbit Polyclonal Antibody (Pab)**  
**Catalog # AP16399B****Specification**

---

**CD226 Antibody (C-term) - Product Information**

Application	WB,E
Primary Accession	<a href="#">Q15762</a>
Other Accession	<a href="#">NP_006557.2</a>
Reactivity	Human
Host	Rabbit
Clonality	Polyclonal
Isotype	Rabbit IgG
Calculated MW	38614
Antigen Region	307-335

**CD226 Antibody (C-term) - Additional Information****Gene ID** 10666**Other Names**

CD226 antigen, DNAX accessory molecule 1, DNAM-1, CD226, CD226, DNAM1

**Target/Specificity**

This CD226 antibody is generated from rabbits immunized with a KLH conjugated synthetic peptide between 307-335 amino acids from the C-terminal region of human CD226.

**Dilution**

WB~~1:1000

**Format**

Purified polyclonal antibody supplied in PBS with 0.09% (W/V) sodium azide. This antibody is purified through a protein A column, followed by peptide affinity purification.

**Storage**

Maintain refrigerated at 2-8°C for up to 2 weeks. For long term storage store at -20°C in small aliquots to prevent freeze-thaw cycles.

**Precautions**

CD226 Antibody (C-term) is for research use only and not for use in diagnostic or therapeutic procedures.

**CD226 Antibody (C-term) - Protein Information****Name** CD226**Synonyms** DNAM1

**Function** Cell surface receptor that plays an important role in the immune system, particularly in intercellular adhesion, lymphocyte signaling, cytotoxicity and lymphokine secretion mediated by cytotoxic T-cells and NK cells (PubMed:[8673704](#), PubMed:[9712030](#)). Functions as a costimulatory receptor upon recognition of target cells, such as virus- infected or tumor cells. Upon binding to its ligands PVR/CD155 or NECTIN2/CD112 on target cells, promotes the cytotoxic activity of NK cells and CTLs, enhancing their ability to kill these cells (PubMed:[26755705](#), PubMed:[31253644](#), PubMed:[30591568](#)). Mechanistically, phosphorylation by Src kinases such as LYN or FYN, enables binding to adapter GRB2, leading to activation of VAV1, PI3K and PLCG1. Promotes also activation of kinases ERK and AKT, as well as calcium fluxes (By similarity).

#### **Cellular Location**

Cell membrane; Single-pass type I membrane protein. Note=Localizes to lipid rafts.

#### **Tissue Location**

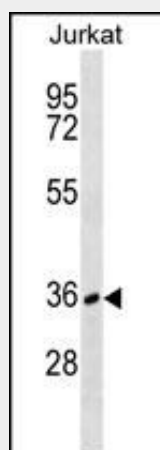
Expressed by peripheral blood T-lymphocytes.

### **CD226 Antibody (C-term) - Protocols**

Provided below are standard protocols that you may find useful for product applications.

- [Western Blot](#)
- [Blocking Peptides](#)
- [Dot Blot](#)
- [Immunohistochemistry](#)
- [Immunofluorescence](#)
- [Immunoprecipitation](#)
- [Flow Cytometry](#)
- [Cell Culture](#)

### **CD226 Antibody (C-term) - Images**



CD226 Antibody (C-term) (Cat. #AP16399b) western blot analysis in Jurkat cell line lysates (35ug/lane). This demonstrates the CD226 antibody detected the CD226 protein (arrow).

### **CD226 Antibody (C-term) - Background**

CD226 is a glycoprotein expressed on the surface of NK cells, platelets, monocytes and a subset of T cells. It is a member of the Ig-superfamily containing 2 Ig-like domains of the V-set. The protein mediates cellular adhesion of platelets and

megakaryocytic cells to vascular endothelial cells. The protein also plays a role in megakaryocytic cell maturation. [provided by RefSeq].

#### **CD226 Antibody (C-term) - References**

Lofgren, S.E., et al. Arthritis Rheum. 62(11):3404-3414(2010)  
Carlsten, M., et al. Leukemia 24(9):1607-1616(2010)  
Plant, D., et al. Ann. Rheum. Dis. 69(8):1548-1553(2010)  
Alcina, A., et al. Genes Immun. 11(5):439-445(2010)  
Jian, J.L., et al. J. Biol. Chem. 281(39):28731-28736(2006)