

**COL6A2 Antibody (C-term)**  
**Affinity Purified Rabbit Polyclonal Antibody (Pab)**  
**Catalog # AP16397b****Specification**

---

**COL6A2 Antibody (C-term) - Product Information**

Application	<b>WB,E</b>
Primary Accession	<a href="#">P12110</a>
Other Accession	<a href="#">Q02788</a> , <a href="#">NP_001840.3</a> , <a href="#">NP_478055.2</a>
Reactivity	<b>Human</b>
Predicted	<b>Mouse</b>
Host	<b>Rabbit</b>
Clonality	<b>Polyclonal</b>
Isotype	<b>Rabbit IgG</b>
Calculated MW	<b>108579</b>
Antigen Region	<b>719-747</b>

**COL6A2 Antibody (C-term) - Additional Information****Gene ID** 1292**Other Names**

Collagen alpha-2(VI) chain, COL6A2

**Target/Specificity**

This COL6A2 antibody is generated from rabbits immunized with a KLH conjugated synthetic peptide between 719-747 amino acids from the C-terminal region of human COL6A2.

**Dilution**

WB~~1:1000

**Format**

Purified polyclonal antibody supplied in PBS with 0.09% (W/V) sodium azide. This antibody is purified through a protein A column, followed by peptide affinity purification.

**Storage**

Maintain refrigerated at 2-8°C for up to 2 weeks. For long term storage store at -20°C in small aliquots to prevent freeze-thaw cycles.

**Precautions**

COL6A2 Antibody (C-term) is for research use only and not for use in diagnostic or therapeutic procedures.

**COL6A2 Antibody (C-term) - Protein Information****Name** COL6A2**Function** Collagen VI acts as a cell-binding protein.

### Cellular Location

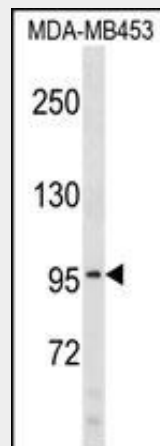
Secreted, extracellular space, extracellular matrix. Membrane; Peripheral membrane protein.  
Note=Recruited on membranes by CSPG4

### COL6A2 Antibody (C-term) - Protocols

Provided below are standard protocols that you may find useful for product applications.

- [Western Blot](#)
- [Blocking Peptides](#)
- [Dot Blot](#)
- [Immunohistochemistry](#)
- [Immunofluorescence](#)
- [Immunoprecipitation](#)
- [Flow Cytometry](#)
- [Cell Culture](#)

### COL6A2 Antibody (C-term) - Images



COL6A2 Antibody (C-term) (Cat. #AP16397b) western blot analysis in MDA-MB453 cell line lysates (35ug/lane). This demonstrates the COL6A2 antibody detected the COL6A2 protein (arrow).

### COL6A2 Antibody (C-term) - Background

COL6A2 is one of the three alpha chains of type VI collagen, a beaded filament collagen found in most connective tissues. The product of this gene contains several domains similar to von Willebrand Factor type A domains. These domains have been shown to bind extracellular matrix proteins, an interaction that explains the importance of this collagen in organizing matrix components. Mutations in this gene are associated with Bethlem myopathy and Ullrich scleroatonic muscular dystrophy. Three transcript variants have been identified for this gene. [provided by RefSeq].

### COL6A2 Antibody (C-term) - References

Zhang, R.Z., et al. J. Biol. Chem. 285(13):10005-10015(2010)  
Bovolenta, M., et al. BMC Med. Genet. 11, 44 (2010) :  
Chapuis, J., et al. Mol. Psychiatry 14(11):1004-1016(2009)

Freise, C., et al. Matrix Biol. 28(8):480-489(2009)  
Martoni, E., et al. Hum. Mutat. 30 (5), E662-E672 (2009) :