

**LIMA1 Antibody (N-term)**  
**Affinity Purified Rabbit Polyclonal Antibody (Pab)**  
**Catalog # AP16362a****Specification**

---

**LIMA1 Antibody (N-term) - Product Information**

Application	WB,E
Primary Accession	<a href="#">O9UHB6</a>
Other Accession	<a href="#">NP_001107019.1</a> , <a href="#">NP_001107018.1</a>
Reactivity	Human
Host	Rabbit
Clonality	Polyclonal
Isotype	Rabbit IgG
Calculated MW	85226
Antigen Region	135-163

**LIMA1 Antibody (N-term) - Additional Information****Gene ID** 51474**Other Names**

LIM domain and actin-binding protein 1, Epithelial protein lost in neoplasm, LIMA1, EPLIN, SREBP3

**Target/Specificity**

This LIMA1 antibody is generated from rabbits immunized with a KLH conjugated synthetic peptide between 135-163 amino acids from the N-terminal region of human LIMA1.

**Dilution**

WB~~1:1000

**Format**

Purified polyclonal antibody supplied in PBS with 0.09% (W/V) sodium azide. This antibody is purified through a protein A column, followed by peptide affinity purification.

**Storage**

Maintain refrigerated at 2-8°C for up to 2 weeks. For long term storage store at -20°C in small aliquots to prevent freeze-thaw cycles.

**Precautions**

LIMA1 Antibody (N-term) is for research use only and not for use in diagnostic or therapeutic procedures.

**LIMA1 Antibody (N-term) - Protein Information****Name** LIMA1 ([HGNC:24636](#))

**Function** Actin-binding protein involved in actin cytoskeleton regulation and dynamics. Increases the number and size of actin stress fibers and inhibits membrane ruffling. Inhibits actin filament

depolymerization. Bundles actin filaments, delays filament nucleation and reduces formation of branched filaments (PubMed:[12566430](#)). Acts as a negative regulator of primary cilium formation (PubMed:[32496561](#)). Plays a role in cholesterol homeostasis. Influences plasma cholesterol levels through regulation of intestinal cholesterol absorption. May act as a scaffold protein by regulating NPC1L1 transportation, an essential protein for cholesterol absorption, to the plasma membrane by recruiting MYO5B to NPC1L1, and thus facilitates cholesterol uptake (By similarity).

#### Cellular Location

Cytoplasm. Cell junction, focal adhesion. Cytoplasm, cytoskeleton. Cytoplasm, cytoskeleton, stress fiber. Cell membrane {ECO:0000250|UniProtKB:Q9ERG0}. Cell projection, ruffle. Note=Expressed in the brush border membrane of the small intestine and colocalizes with NPC1L1 and MYO5B (PubMed:29880681). Colocalizes with PXN at focal adhesions in mesangial cells (PubMed:24694988). Colocalizes with actin stress fibers in quiescent cells. PDGF stimulation induced disassembly of stress fibers and formation of peripheral and dorsal ruffles, where LIMA1 is relocalized (By similarity). {ECO:0000250|UniProtKB:Q9ERG0, ECO:0000269|PubMed:24694988, ECO:0000269|PubMed:29880681}

#### Tissue Location

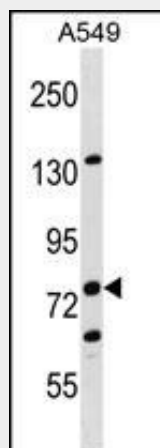
Highly expressed in placenta, kidney, pancreas, prostate, ovary, spleen and heart. Also detected in lung, liver, brain, skeletal muscle, thymus, testis and intestine. Not detected in leukocytes. Isoform Beta expressed generally at very low levels Isoform Alpha abundant in epithelial cells from mammary gland, prostate and in normal oral keratinocytes. Low levels in aortic endothelial cells and dermal fibroblasts. Not detectable in myocardium

#### LIMA1 Antibody (N-term) - Protocols

Provided below are standard protocols that you may find useful for product applications.

- [Western Blot](#)
- [Blocking Peptides](#)
- [Dot Blot](#)
- [Immunohistochemistry](#)
- [Immunofluorescence](#)
- [Immunoprecipitation](#)
- [Flow Cytometry](#)
- [Cell Culture](#)

#### LIMA1 Antibody (N-term) - Images



LIMA1 Antibody (N-term) (Cat. #AP16362a) western blot analysis in A549 cell line lysates

(35ug/lane). This demonstrates the LIMA1 antibody detected the LIMA1 protein (arrow).

#### **LIMA1 Antibody (N-term) - Background**

EPLIN is a cytoskeleton-associated protein that inhibits actin filament depolymerization and cross-links filaments in bundles (Maul et al., 2003 [PubMed 12566430]).

#### **LIMA1 Antibody (N-term) - References**

Chircop, M., et al. Cell Cycle 8(5):757-764(2009)  
Abe, K., et al. Proc. Natl. Acad. Sci. U.S.A. 105(1):13-19(2008)  
Jiang, W.G., et al. Mol. Cancer 7, 71 (2008) :  
Sugiyama, N., et al. Mol. Cell Proteomics 6(6):1103-1109(2007)  
Olsen, J.V., et al. Cell 127(3):635-648(2006)